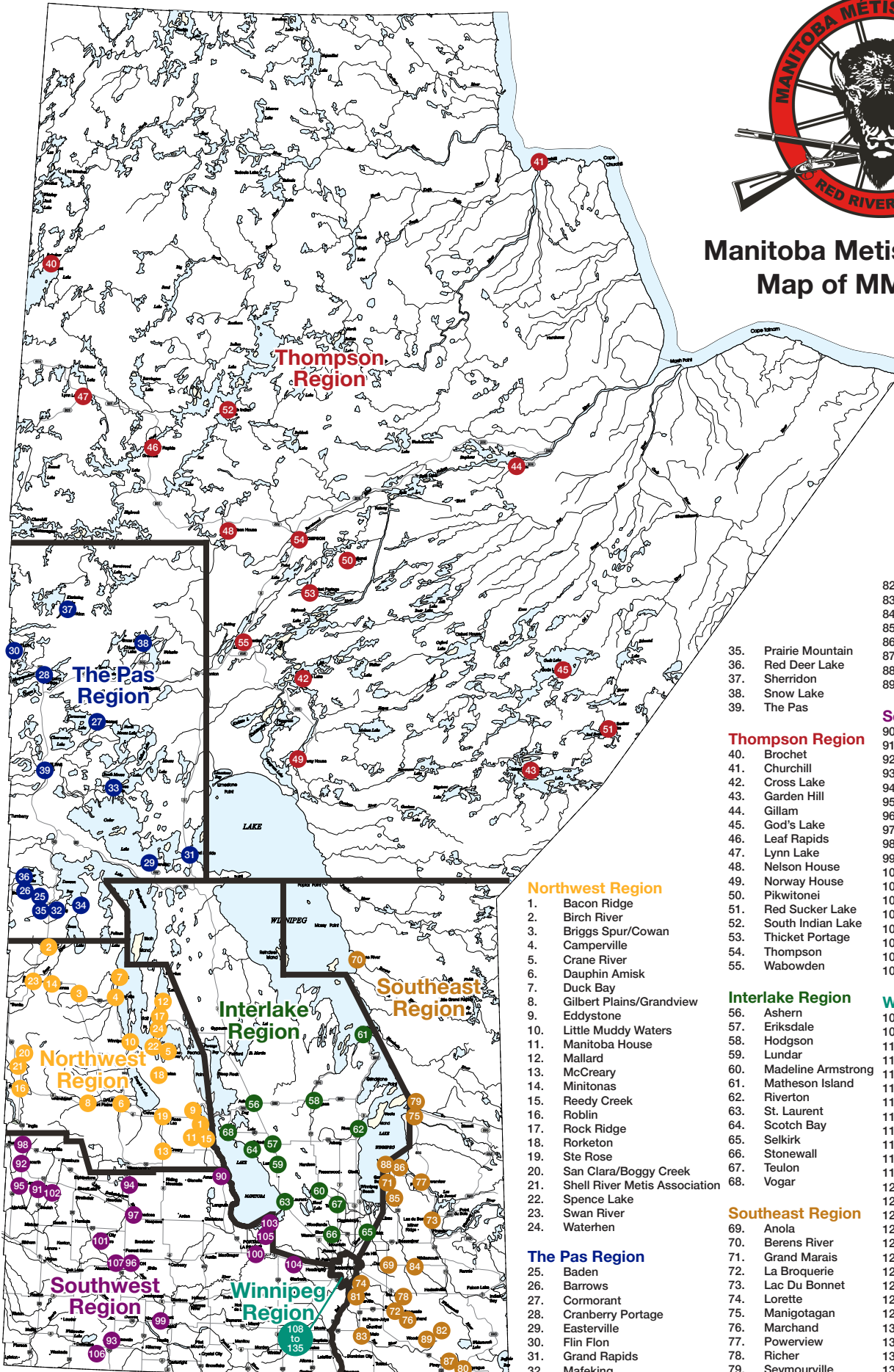




## Manitoba Metis Federation Map of MMF Locals



- |                                   |                                   |
|-----------------------------------|-----------------------------------|
| 35. Prairie Mountain              | 82. St. Labre                     |
| 36. Red Deer Lake                 | 83. St. Malo                      |
| 37. Sherridon                     | 84. Ste Rita                      |
| 38. Snow Lake                     | 85. Stoney Point                  |
| 39. The Pas                       | 86. Traverse Bay                  |
|                                   | 87. Vassar                        |
|                                   | 88. Victoria Beach                |
|                                   | 89. Woodridge                     |
|                                   | <b>Southwest Region</b>           |
| <b>Thompson Region</b>            | 90. Amaranth                      |
| 40. Brochet                       | 91. Assiniboine                   |
| 41. Churchill                     | 92. Binscarth/Ste Madeline Birtle |
| 42. Cross Lake                    | 93. Cherry Creek Metis Council    |
| 43. Garden Hill                   | 94. Erickson/Wapiti               |
| 44. Gillam                        | 95. Fort Ellice                   |
| 45. God's Lake                    | 96. Grand Valley                  |
| 46. Leaf Rapids                   | 97. Les Metis                     |
| 47. Lynn Lake                     | 98. Pelly Trail/Russell           |
| 48. Nelson House                  | 99. Pembina River                 |
| 49. Norway House                  | 100. Portage                      |
| 50. Pikwitonei                    | 101. Rivers                       |
| 51. Red Sucker Lake               | 102. Snake Creek                  |
| 52. South Indian Lake             | 103. St. Ambrose                  |
| 53. Thicket Portage               | 104. St. Eustace                  |
| 54. Thompson                      | 105. St. Marks                    |
| 55. Wabowden                      | 106. Turtle Mountain              |
|                                   | 107. Westman                      |
| <b>Northwest Region</b>           |                                   |
| 1. Bacon Ridge                    |                                   |
| 2. Birch River                    |                                   |
| 3. Briggs Spur/Cowan              |                                   |
| 4. Campville                      |                                   |
| 5. Crane River                    |                                   |
| 6. Dauphin Amisk                  |                                   |
| 7. Duck Bay                       |                                   |
| 8. Gilbert Plains/Grandview       |                                   |
| 9. Eddystone                      |                                   |
| 10. Little Muddy Waters           |                                   |
| 11. Manitoba House                |                                   |
| 12. Mallard                       |                                   |
| 13. McCreary                      |                                   |
| 14. Minitonas                     |                                   |
| 15. Reedy Creek                   |                                   |
| 16. Robin                         |                                   |
| 17. Rock Ridge                    |                                   |
| 18. Rorketon                      |                                   |
| 19. Ste Rose                      |                                   |
| 20. San Clara/Boggy Creek         |                                   |
| 21. Shell River Metis Association |                                   |
| 22. Spence Lake                   |                                   |
| 23. Swan River                    |                                   |
| 24. Waterhen                      |                                   |
| <b>Interlake Region</b>           |                                   |
| 56. Ashern                        |                                   |
| 57. Eriksdale                     |                                   |
| 58. Hodgson                       |                                   |
| 59. Lundar                        |                                   |
| 60. Madeline Armstrong            |                                   |
| 61. Matheson Island               |                                   |
| 62. Riverton                      |                                   |
| 63. St. Laurent                   |                                   |
| 64. Scotch Bay                    |                                   |
| 65. Selkirk                       |                                   |
| 66. Stonewall                     |                                   |
| 67. Teulon                        |                                   |
| 68. Vogar                         |                                   |
| <b>Winnipeg Region</b>            |                                   |
| 108. Blueberry                    |                                   |
| 109. Bosco                        |                                   |
| 110. Cattfish                     |                                   |
| 111. Conseil Elzéar Goulet        |                                   |
| 112. Dakota                       |                                   |
| 113. Dumont                       |                                   |
| 114. Fontaine                     |                                   |
| 115. Gilbert Park                 |                                   |
| 116. Heritage Proud               |                                   |
| 117. Infinity                     |                                   |
| 118. Keenleyside                  |                                   |
| 119. Kinew                        |                                   |
| 120. Liberty                      |                                   |
| 121. Metis Elders                 |                                   |
| 122. Michif                       |                                   |
| 123. New Horizons                 |                                   |
| 124. Point Douglas                |                                   |
| 125. Prairie Buffalo              |                                   |
| 126. Red River                    |                                   |
| 127. Redboine                     |                                   |
| 128. Riel                         |                                   |
| 129. Seven Oaks                   |                                   |
| 130. South Central                |                                   |
| 131. Spruce                       |                                   |
| 132. St. Norbert                  |                                   |
| 133. St. Vital North              |                                   |
| 134. Winnipeg North               |                                   |
| 135. Winnipeg West                |                                   |
| <b>The Pas Region</b>             |                                   |
| 25. Baden                         |                                   |
| 26. Barrows                       |                                   |
| 27. Cormorant                     |                                   |
| 28. Cranberry Portage             |                                   |
| 29. Easterville                   |                                   |
| 30. Flin Flon                     |                                   |
| 31. Grand Rapids                  |                                   |
| 32. Mafeking                      |                                   |
| 33. Moose Lake                    |                                   |
| 34. Pelican Rapids                |                                   |
| <b>Southeast Region</b>           |                                   |
| 69. Anola                         |                                   |
| 70. Berens River                  |                                   |
| 71. Grand Marais                  |                                   |
| 72. La Broquerie                  |                                   |
| 73. Lac Du Bonnet                 |                                   |
| 74. Lorette                       |                                   |
| 75. Manigotagan                   |                                   |
| 76. Marchand                      |                                   |
| 77. Powerview                     |                                   |
| 78. Richer                        |                                   |
| 79. Seymourville                  |                                   |
| 80. South Junction                |                                   |
| 81. St. Adolphe                   |                                   |