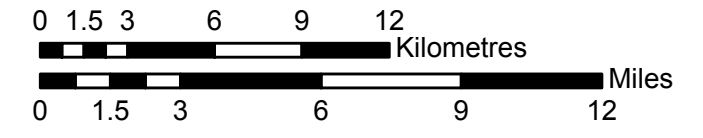




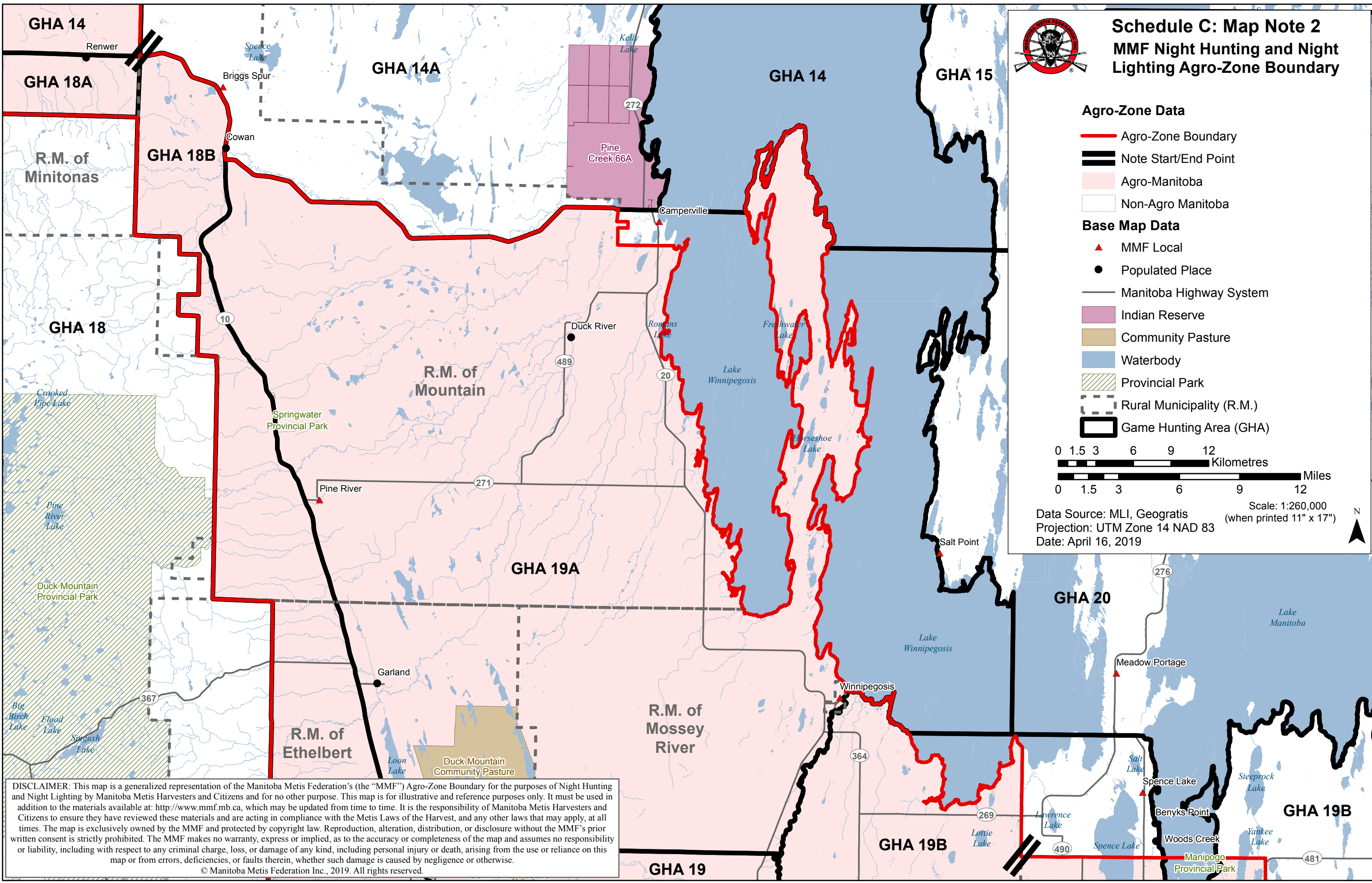
Schedule C: Map Note 2 MMF Night Hunting and Night Lighting Agro-Zone Boundary

Agro-Zone Data

- Agro-Zone Boundary
 - ==** Note Start/End Point
 - Agro-Manitoba
 - Non-Agro Manitoba
- ## Base Map Data
- ▲ MMF Local
 - Populated Place
 - Manitoba Highway System
 - Indian Reserve
 - Community Pasture
 - Waterbody
 - Provincial Park
 - Rural Municipality (R.M.)
 - Game Hunting Area (GHA)



Scale: 1:260,000
(when printed 11" x 17")
Data Source: MLI, Geogratis
Projection: UTM Zone 14 NAD 83
Date: April 16, 2019



DISCLAIMER: This map is a generalized representation of the Manitoba Metis Federation's (the "MMF") Agro-Zone Boundary for the purposes of Night Hunting and Night Lighting by Manitoba Metis Harvesters and Citizens and for no other purpose. This map is for illustrative and reference purposes only. It must be used in addition to the materials available at: <http://www.mmf.mb.ca>, which may be updated from time to time. It is the responsibility of Manitoba Metis Harvesters and Citizens to ensure they have reviewed these materials and are acting in compliance with the Metis Laws of the Harvest, and any other laws that may apply, at all times. The map is exclusively owned by the MMF and protected by copyright law. Reproduction, alteration, distribution, or disclosure without the MMF's prior written consent is strictly prohibited. The MMF makes no warranty, express or implied, as to the accuracy or completeness of the map and assumes no responsibility or liability, including with respect to any criminal charge, loss, or damage of any kind, including personal injury or death, arising from the use or reliance on this map or from errors, deficiencies, or faults therein, whether such damage is caused by negligence or otherwise.

© Manitoba Metis Federation Inc., 2019. All rights reserved.