

2024 12 30

## NOTICE OF OPERATING PLAN FORECAST - **BURNTWOOD RIVER FLOW**

On January 1, 2025 the Burntwood River flow is forecasted to be 220 cubic feet per second (cfs). The flow is expected to remain fairly constant near 200 cfs until the end of January.

During the month of February the flow is expected to remain fairly constant near 200 cfs until the end of February.

**Distribution List:**

CHIEF, Tataskweyak Cree Nation, Split Lake

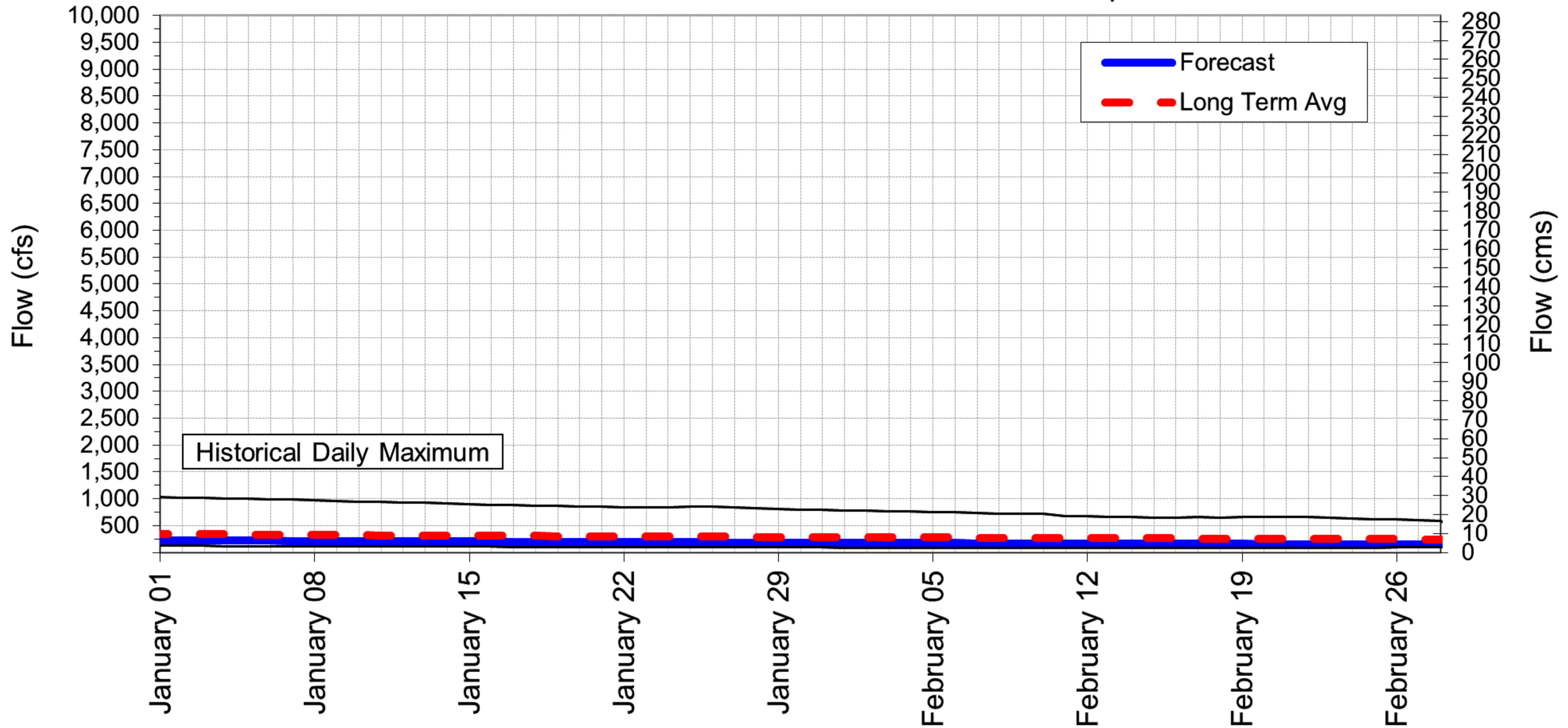
CHIEF, War Lake First Nation, Ilford

Manitoba Métis Federation, President Chartrand, Winnipeg

Regional Director General, Manitoba Region, Indigenous and Northern Affairs Canada

# BURNTWOOD RIVER FLOW 60 Day Flow Forecast Jan 1, 2025 to Feb 28, 2025

Station: 05TE002 Burntwood River above Leaf Rapids



## Notes:

- Based on Manitoba Hydro Forecast dated: Dec 30, 2024
- Period of Record: Aug/85 to Present
- Historical daily minimum & maximum flows pertain to the period of record above
- Conversion: 1 cms = 35.31 cfs

---

2024 12 30

## NOTICE OF OPERATING PLAN FORECAST - **CEDAR LAKE**

On January 1, 2025 the level of Cedar Lake is forecasted to be 839.4 feet. The level of the lake is expected to fall 3 feet 2 inches to elevation 836.2 feet by the end of January.

During the month of February the level of the lake is expected to fall 1 foot 9 inches to elevation 834.3 feet by the third week of the month and then rise 1 inch to elevation 834.4 feet by the end of February.

For water level and flow information including near real-time water levels and 14-day forecast estimates, please visit Manitoba Hydro's website at [www.hydro.mb.ca/waterlevels](http://www.hydro.mb.ca/waterlevels)

**Distribution List:**

CHIEF, Misipawistik Cree Nation

MAYOR, Easterville Community Council

MAYOR, Town of Grand Rapids

Opaskwayak Commercial Fishermens Coop, R. Lavallee, The Pas

Opaskwayak Cree Nation, Lands Authority Branch

Opaskwayak Cree Nation, Natural Resource

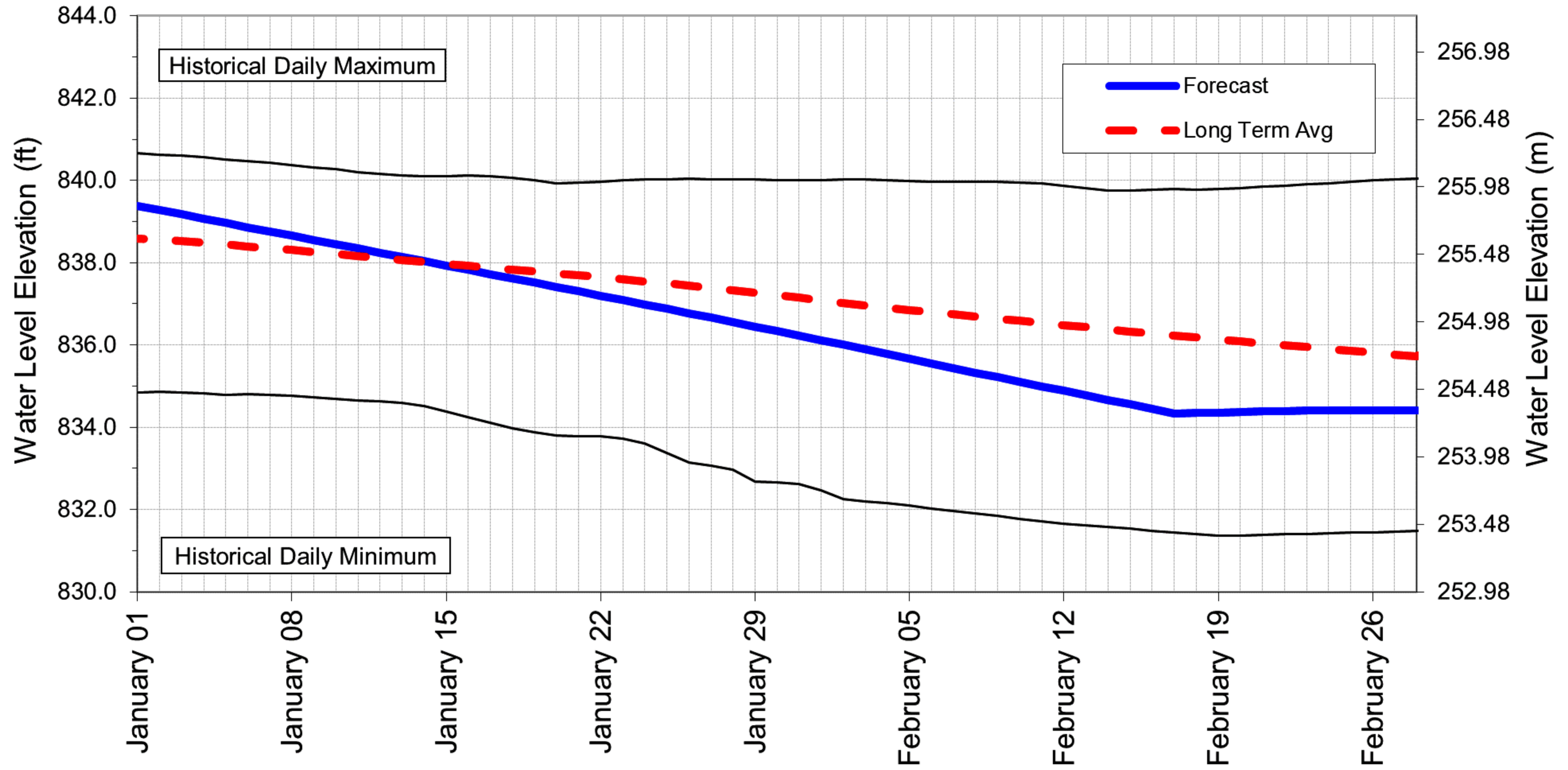
Manitoba Métis Federation, President Chartrand, Winnipeg

Regional Director General, Manitoba Region, Indigenous and Northern Affairs Canada

CBC North Country Radio for broadcast in Cree & English @ 8:30 AM & 12:30 PM for 4 consecutive days from receipt



CEDAR LAKE 60 Day Water Level Forecast Jan 01, 2025 to Feb 28, 2025  
 Station: 05KL005 Cedar Lake near Oleson Point



Notes:

- Based on Manitoba Hydro Forecast dated: December 30, 2024
- Period of Record: Apr/77 to Present
- Historical daily minimum & maximum water levels pertain to the period of record above
- Conversion: 1 foot = 0.3048 metres

Please post this graph in a conspicuous location for residents' reference.

2024 12 30

## NOTICE OF OPERATING PLAN FORECAST - **CROSS LAKE**

On January 1, 2025 the level of Cross Lake is forecasted to be 681.6 feet. The level of the lake is expected to fall 2 inches to elevation 681.4 feet by the end of January.

During the month of February the level of the lake is expected to fall 4 inches to elevation 681.1 feet by the end of the month.

For water level and flow information including near real-time water levels and 7-day forecast estimates, please visit Manitoba Hydro's website at [www.hydro.mb.ca/waterlevels](http://www.hydro.mb.ca/waterlevels)

**Distribution List:**

CHIEF, Cross Lake First Nation

MAYOR, Cross Lake Community Council

Communications Officer, Pimicikamak Cree Nation

Manitoba Métis Federation, President Chartrand, Winnipeg

Regional Director General, Manitoba Region, Indigenous and Northern Affairs Canada

CBC North Country Radio for broadcast as Community Service Announcement

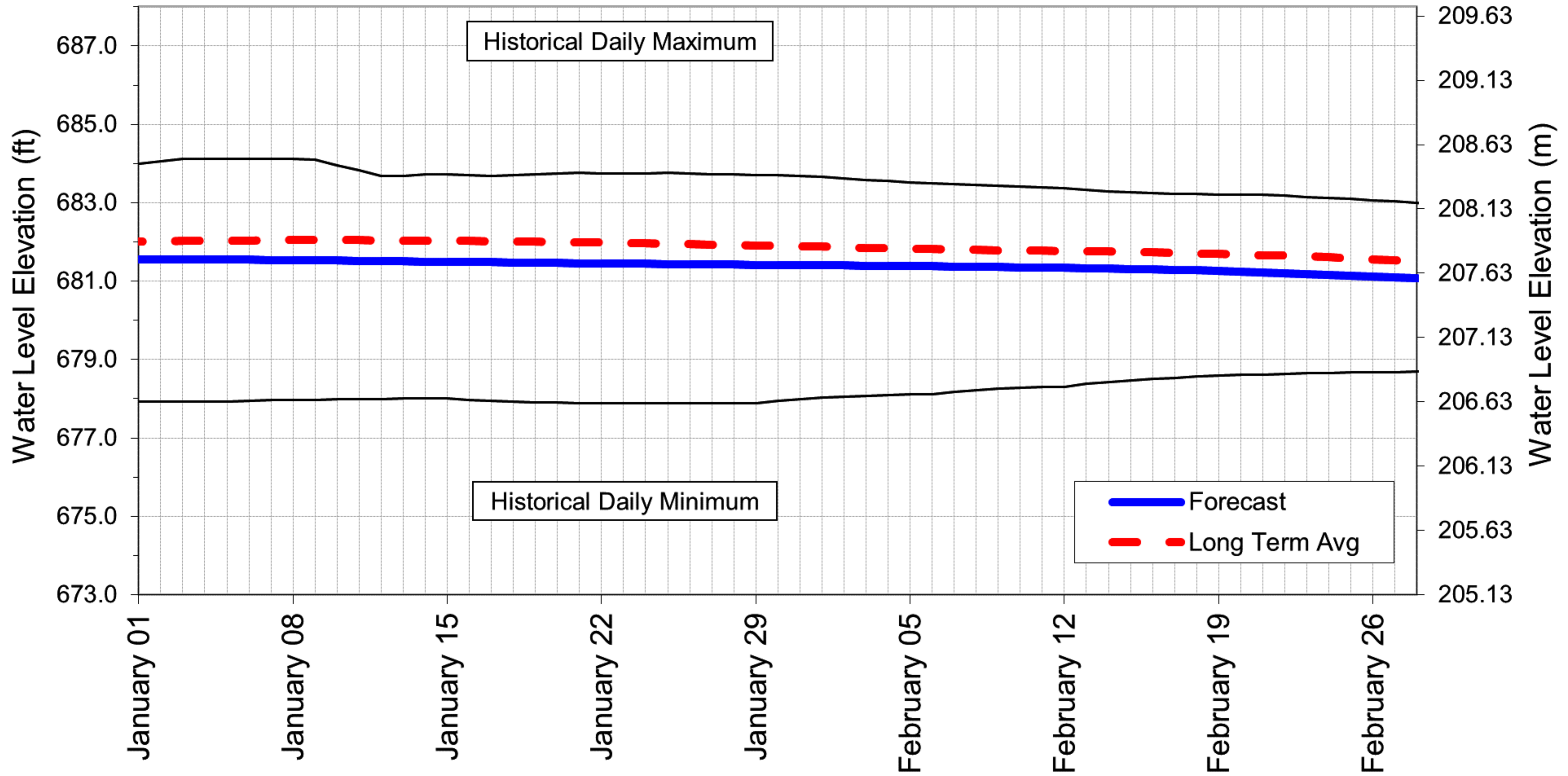
Arctic Radio CHTM Thompson for broadcast in Cree & English @ 7:00 PM & 8:30 PM for 4 consecutive days from receipt

CFNC Cross Lake Radio for broadcast in Cree & English f@ 12:30 PM & 6:30 PM or 4 consecutive days from receipt



# CROSS LAKE 60 Day Water Level Forecast Jan 1, 2025 to Feb 28, 2025

Station: 05UD001 Cross Lake @ Cross Lake



## Notes:

- Based on Manitoba Hydro Forecast dated: Dec 30, 2024
- Period of Record: Apr/92 to Present
- Historical daily minimum & maximum water levels pertain to the period of record above
- Conversion: 1 foot = 0.3048 metres

Please post this graph in a conspicuous location for residents' reference.

2024 12 30

## NOTICE OF OPERATING PLAN FORECAST - **FOOTPRINT LAKE**

On January 1, 2025 the level of Footprint Lake is forecasted to be 794.6 feet. The level of the lake is expected to rise 5 inches to elevation 795.0 feet by the end of January.

During the month of February the level of the lake is expected to rise 2 inches to elevation 795.2 feet by the third week of the month and then fall 5 inches to elevation 794.7 feet by the end of the month.

For water level and flow information including near real-time water levels and 14-day forecast estimates, please visit Manitoba Hydro's website at [www.hydro.mb.ca/waterlevels](http://www.hydro.mb.ca/waterlevels)

**Distribution List:**

CHIEF, Nisichawayasihk Cree Nation, Nelson House

MAYOR, Nelson House Community Council

Manitoba Métis Federation, President Chartrand, Winnipeg

Regional Director General, Manitoba Region, Indigenous and Northern Affairs Canada

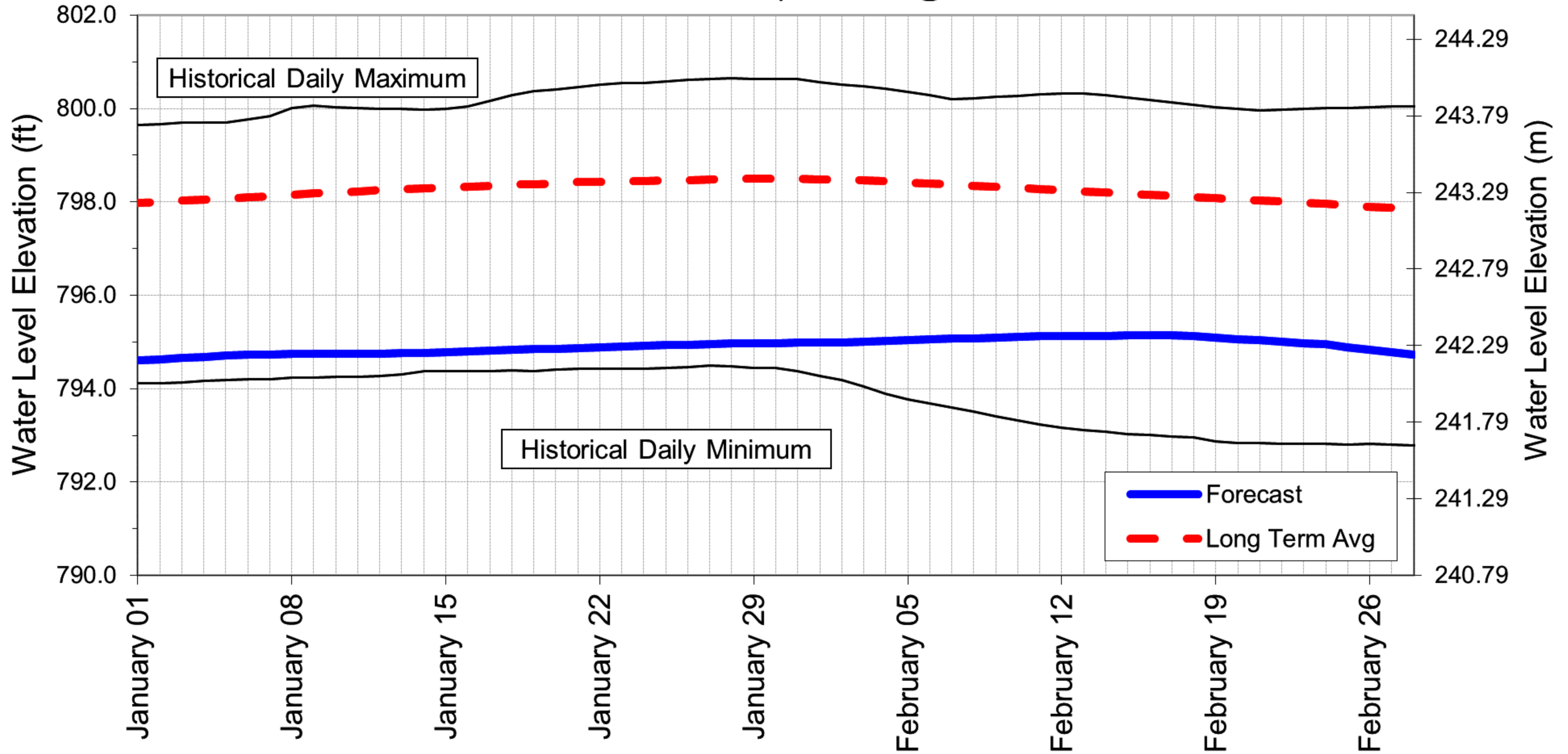
CBC North Country Radio for broadcast as Community Service Announcement

Arctic Radio CHTM Thompson for broadcast in Cree & English @ 7:00 PM & 8:30 PM for 4 consecutive days from receipt

NCN Achimowin TV/Radio Communications for broadcast in Cree & English for 4 consecutive days from receipt



FOOTPRINT LAKE 60 Day Water Level Forecast Jan 1, 2025 to Feb 28, 2025  
 Station: 05TF001 Footprint Lake @ Nelson House



Notes:

- Based on Manitoba Hydro Forecast dated: Dec 30, 2024
- Period of Record: Sep/77 to Present
- Historical daily minimum & maximum water levels pertain to the period of record above
- Conversion: 1 foot = 0.3048 metres



Please post this graph in a conspicuous location for residents' reference.



2024 12 30

## NOTICE OF OPERATING PLAN FORECAST - **GRASS RIVER FLOW**

On January 1, 2025 the Grass River flow is forecasted to be 1,100 cubic feet per second (cfs). The flow is expected to gradually decrease to 900 cfs by the end of January.

During the month of February the flow is expected to gradually decrease to 700 cfs by the end of the month.

**Distribution List:**

CHIEF, Tataskweyak Cree Nation, Split Lake

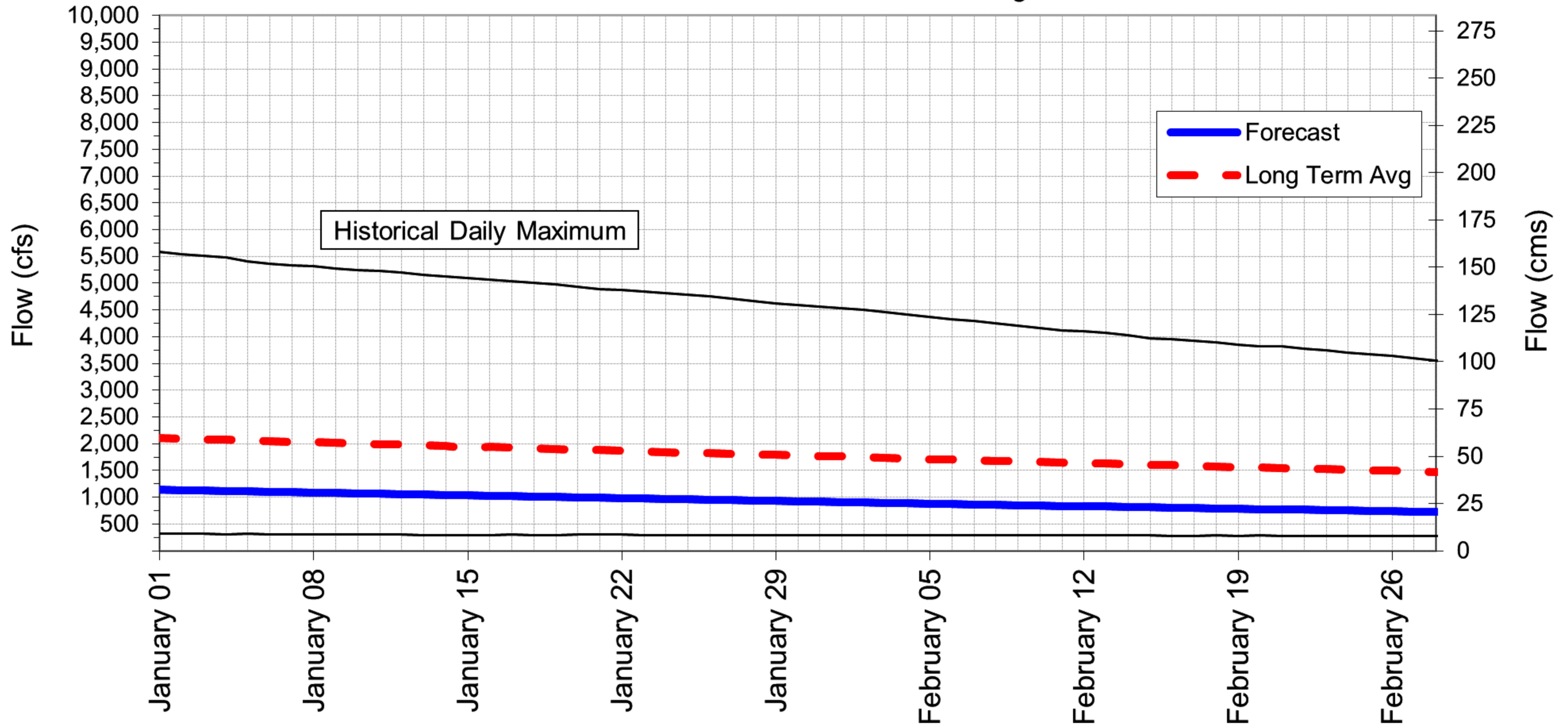
CHIEF, War Lake First Nation, Ilford

Manitoba Métis Federation, President Chartrand, Winnipeg

Regional Director General, Manitoba Region, Indigenous and Northern Affairs Canada

# GRASS RIVER FLOW 60 Day Flow Forecast Jan 1, 2025 to Feb 28, 2025

Station: 05TD001 Grass River above Standing Stone Falls



## Notes:

- Based on Manitoba Hydro Forecast dated: Dec 30, 2024
- Period of Record: Apr/77 to Present
- Historical daily minimum & maximum water flows pertain to the period of record above
- Conversion: 1 cms = 35.31 cfs

2024 12 30

## NOTICE OF OPERATING PLAN FORECAST - **GUNISAO RIVER FLOW**

On January 1, 2025 the Gunisao River flow is forecasted to be 370 cubic feet per second (cfs). The flow is expected to gradually decrease to 300 cfs until the end of January.

During the month of February the flow is expected to gradually decrease to 200 cfs until the end of February.

**Distribution List:**

CHIEF, Tataskweyak Cree Nation, Split Lake

CHIEF, War Lake First Nation, Ilford

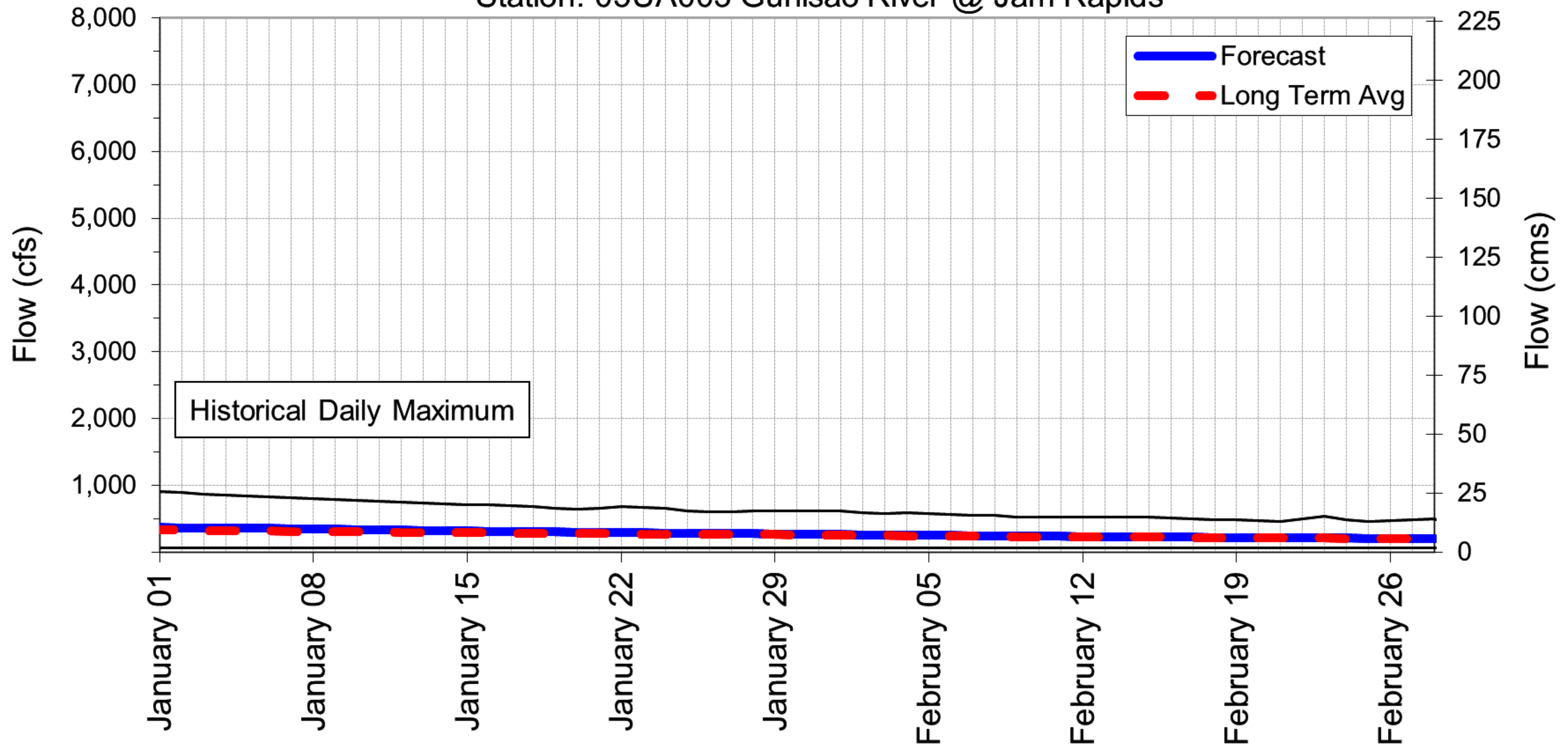
Manitoba Métis Federation, President Chartrand, Winnipeg

Regional Director General, Manitoba Region, Indigenous and Northern Affairs Canada



# GUNISAO RIVER FLOW 60 Day Flow Forecast Jan 1, 2025 to Feb 28, 2025

Station: 05UA003 Gunisao River @ Jam Rapids



## Notes:

- Based on Manitoba Hydro Forecast dated: Dec 30, 2024
- Period of Record: Apr/77 to Present
- Historical daily minimum & maximum flows pertain to the period of record above
- Conversion: 1 cms = 35.31 cfs

2024 12 30

## NOTICE OF OPERATING PLAN FORECAST - **KELSEY FOREBAY**

On January 1, 2025 the level of Kelsey Forebay on the Nelson River is forecasted to be 604.7 feet. The level of the lake is expected to fall 1 inch to elevation 604.6 feet by the end of January.

During the month of February the level of the lake is expected to fall 7 inches to elevation 604.0 feet by the end of the month.

For water level and flow information including near real-time water levels and 14-day forecast estimates, please visit Manitoba Hydro's website at [www.hydro.mb.ca/waterlevels](http://www.hydro.mb.ca/waterlevels)

**Distribution List:**

CHIEF, Tataskweyak Cree Nation, Split Lake

CHIEF, Cross Lake First Nation

CHIEF, War Lake First Nation, Ilford

MAYOR, Cross Lake Community Council

MAYOR, Pikwitonei Community Council

MAYOR, Thicket Portage Community Council

Split Lake Trappers Assoc, E. Flett, Split Lake

Tataskweyak Trust Mgr, Split Lake

Manitoba Métis Federation, President Chartrand, Winnipeg

Regional Director General, Manitoba Region, Indigenous and Northern Affairs Canada

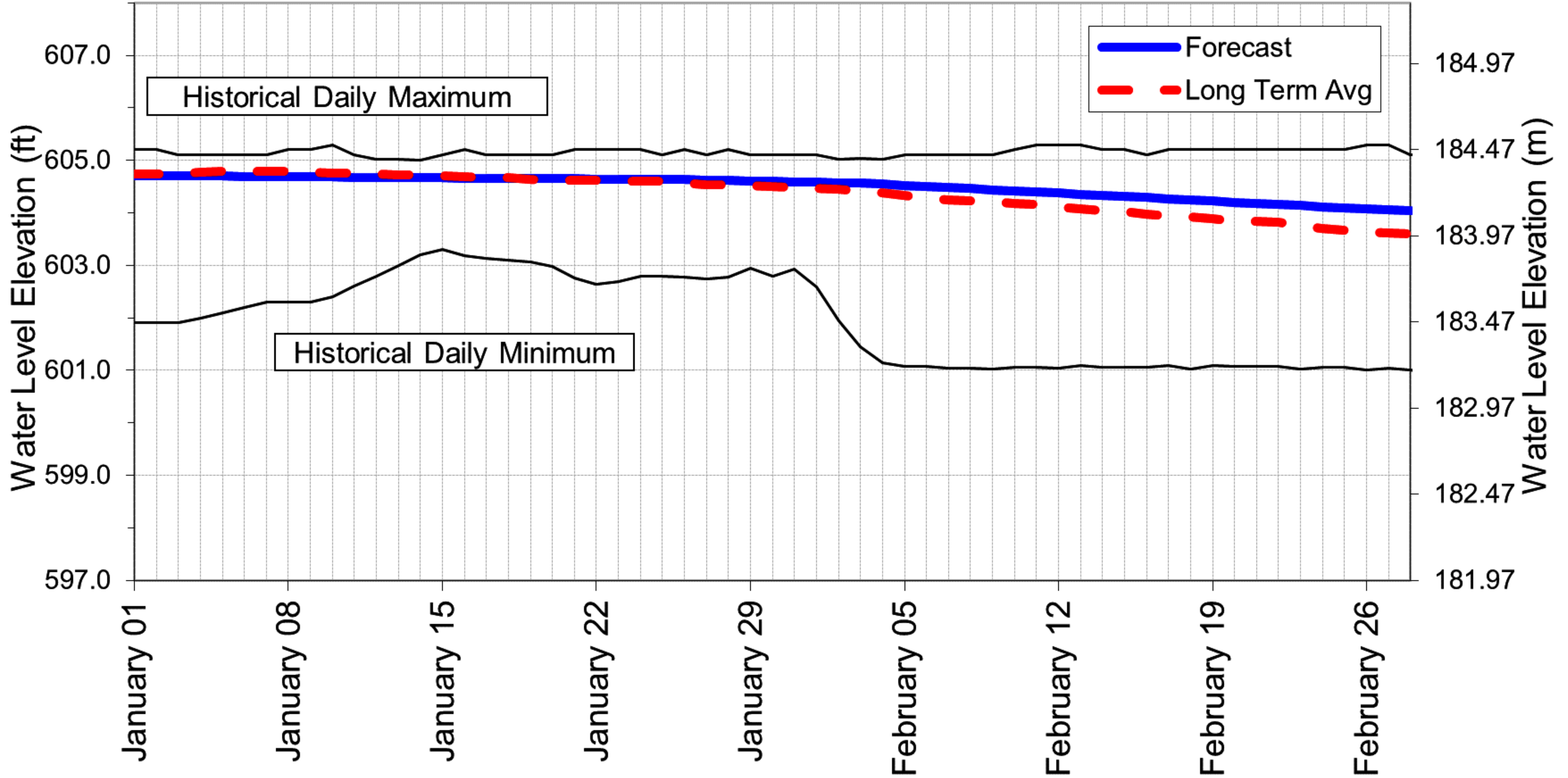
CBC North Country Radio for broadcast as Community Service Announcement

Arctic Radio CHTM Thompson for broadcast in Cree & English @ 7:00 PM & 8:30 PM for 4 consecutive days from receipt

CJKD Split Lake Radio for broadcast in Cree & English twice daily for 4 consecutive days from receipt

# KELSEY FOREBAY 60 Day Water Level Forecast Jan 1, 2025 to Feb 28, 2025

## Station: Kelsey Generating Station



**Notes:**

- Based on Manitoba Hydro Forecast dated: Dec 30, 2024
- Period of Record: Sep/77 to Present
- Historical daily minimum & maximum water levels pertain to the period of record above
- Conversion: 1 foot = 0.3048 metres

**Please post this graph in a conspicuous location for residents' reference.**





2024 12 30

## NOTICE OF OPERATING PLAN FORECAST - **KELSEY OUTFLOWS**

On January 1, 2025 the outflow from Kelsey G.S. is forecasted to be 87,500 cubic feet per second (cfs). The outflow is expected to gradually decrease to 85,200 cfs by the end of January.

During the month of February the outflow is expected to gradually decrease to 82,600 cfs by the end of the month.

**Distribution List:**

CHIEF, Tataskweyak Cree Nation, Split Lake

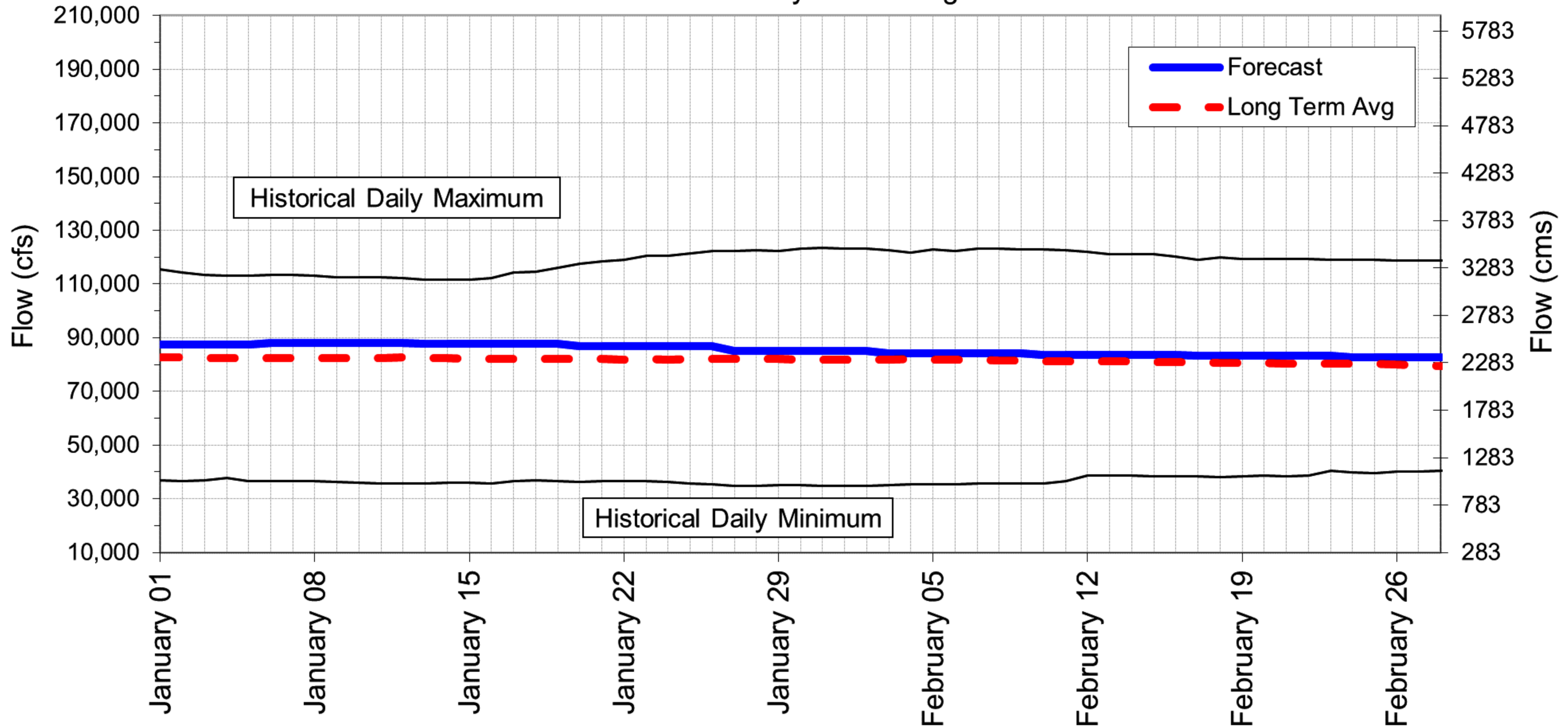
CHIEF, War Lake First Nation, Ilford

Manitoba Métis Federation, President Chartrand, Winnipeg

Regional Director General, Manitoba Region, Indigenous and Northern Affairs Canada

# KELSEY OUTFLOWS 60 Day Flow Forecast Jan 1, 2025 to Feb 28, 2025

Station: Kelsey Generating Station



**Notes:**

- Based on Manitoba Hydro Forecast dated: Dec 30, 2024
- Period of Record: Apr/77 to Present
- Historical daily minimum & maximum flows pertain to the period of record above
- Conversion: 1 cms = 35.31 cfs



2024 12 30

## NOTICE OF OPERATING PLAN FORECAST - **KETTLE OUTFLOWS**

On January 1, 2025 the outflow from Kettle G.S. is forecasted to be 110,700 cubic feet per second (cfs). The outflow is expected to be increased on January 6 to 115,900 cfs and then gradually decrease to 112,100 cfs by the end of the January.

During the month of February the outflow is expected to gradually decrease to 110,000 cfs by the end of the month.

**Distribution List:**

CHIEF, Tataskweyak Cree Nation, Split Lake

CHIEF, War Lake First Nation, Ilford

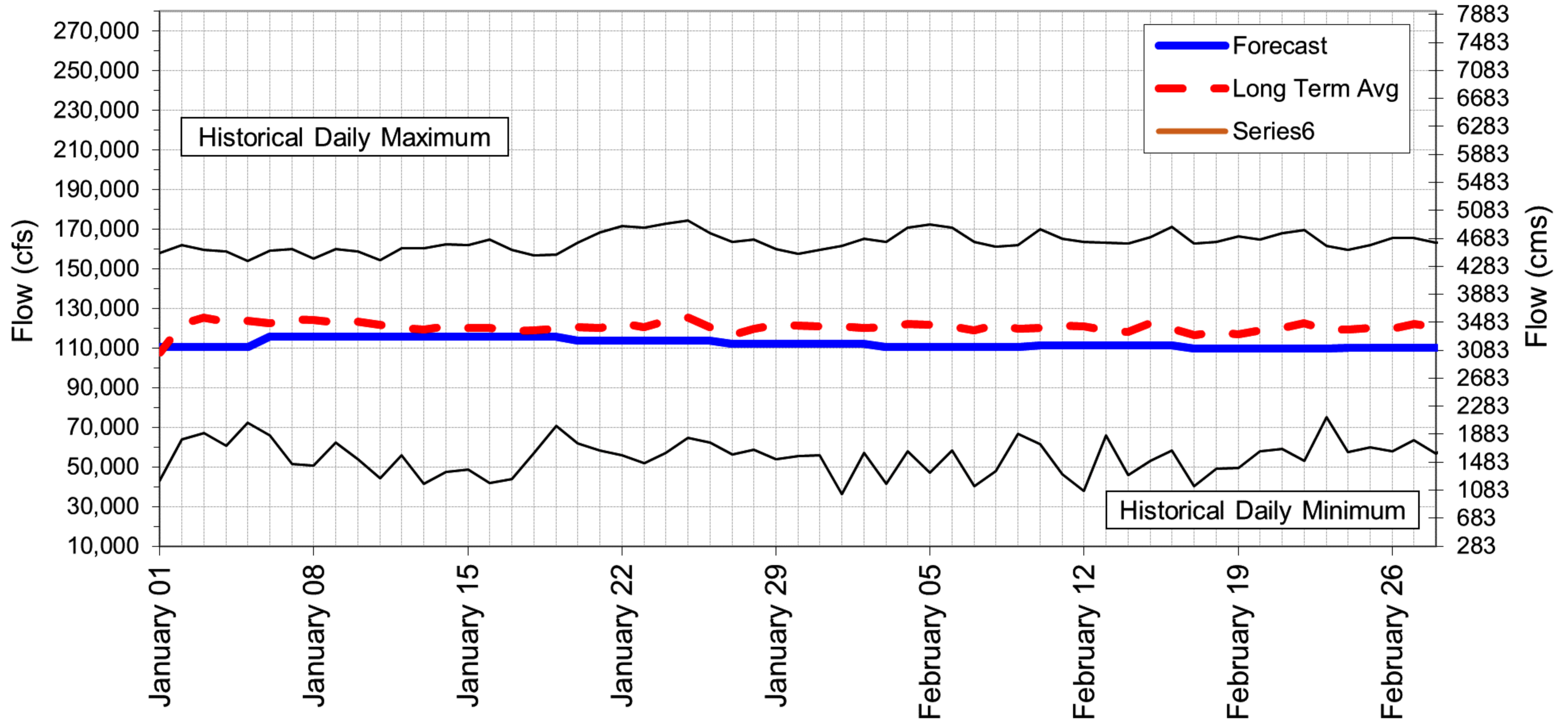
Manitoba Métis Federation, President Chartrand, Winnipeg

Regional Director General, Manitoba Region, Indigenous and Northern Affairs Canada



# KETTLE OUTFLOWS 60 Day Flow Forecast Jan 1, 2025 to Feb 28, 2025

Station: Kettle Generating Station



## Notes:

- Based on Manitoba Hydro Forecast dated: Dec 30, 2024
- Period of Record: Apr/77 to Present
- Historical daily minimum & maximum flows pertain to the period of record above
- Conversion: 1 cms = 35.31 cfs

---

2024 12 30

## NOTICE OF OPERATING PLAN FORECAST - **MISSI FALLS**

On January 1, 2025 the outflows from Missi Falls control structure are forecasted to be 3,230 cubic feet per second (cfs). The outflows are expected to be decreased on January 27 to 2,680 cfs.

For water level and flow information including near real-time water levels and 7-day forecast estimates, please visit Manitoba Hydro's website at [www.hydro.mb.ca/waterlevels](http://www.hydro.mb.ca/waterlevels)

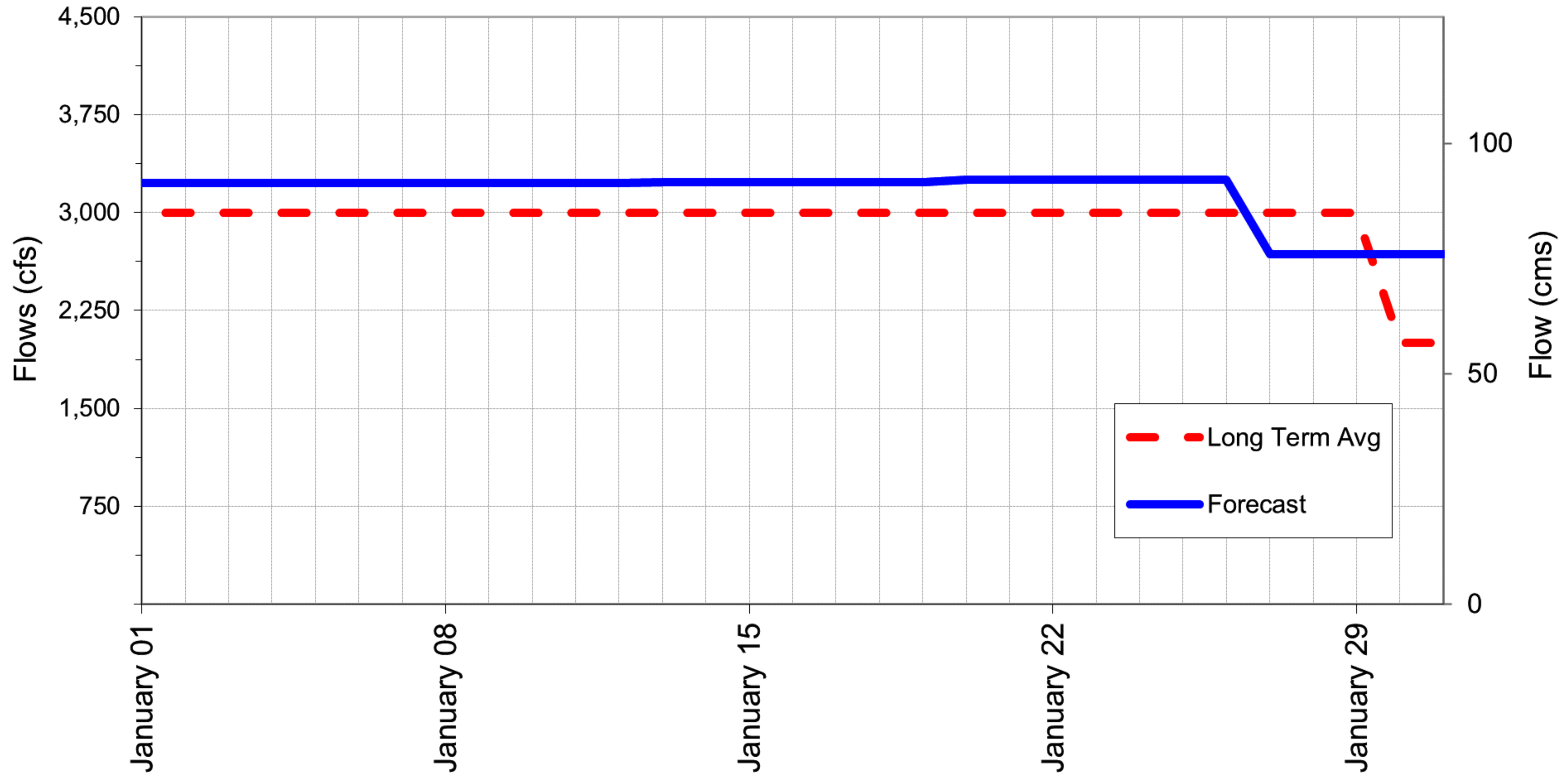
**Distribution List:**

CHIEF, O-Pipon-Na-Piwin Cree Nation, South Indian Lake  
CHIEF, York Factory First Nation, York Landing  
CHIEF, War Lake First Nation, Ilford  
CHIEF, Tataskweyak Cree Nation, Split Lake  
MAYOR, Town of Churchill  
SIL Trappers Association & SIL Fishermens Association, S. Ducharme, South Indian Lake  
YFFN Director of Operations, York Landing  
South Indian Lake Environmental Steering Committee, O-Pipon-Na-Piwin Cree Nation, South Indian Lake  
Manitoba Métis Federation, President Chartrand, Winnipeg  
Regional Director General, Manitoba Region, Indigenous and Northern Affairs Canada  
Arctic Radio CHTM Thompson for broadcast in Cree & English @ 7:00 PM & 8:30 PM for 4 consecutive days from receipt  
CBC North Country Radio for broadcast in Cree & English @ 8:30 AM & 12:30 PM for 4 consecutive days from receipt  
CHYL York Landing Radio for broadcast in Cree & English twice daily for 4 consecutive days from receipt  
Radio station 101.9



# MISSI FALLS OUTFLOWS 30 Day Flow Forecast Jan 1, 2025 to Jan 31, 2025

Station: Missi Falls Control Structure



## Notes:

- Based on Manitoba Hydro Forecast dated: Dec 30, 2024
- Period of Record: Sep/77 to Present
- Conversion: 1 cms = 35.31 cfs



Please post this graph in a conspicuous location for residents' reference.



2024 12 30

## NOTICE OF OPERATING PLAN FORECAST - **SOUTH MOOSE LAKE**

On January 1, 2025 the level of South Moose Lake is forecasted to be 840.7 feet. The level of the lake is expected to fall 2 inches to elevation 840.5 feet by the end of January.

During the month of February the level of the lake is expected to fall 2 inches to elevation 840.3 feet by the end of the month.

For water level and flow information including near real-time water levels and 14-day forecast estimates, please visit Manitoba Hydro's website at [www.hydro.mb.ca/waterlevels](http://www.hydro.mb.ca/waterlevels)

**Distribution List:**

CHIEF, Mosakahiken Cree Nation, South Moose Lake

MAYOR, Moose Lake Community Council

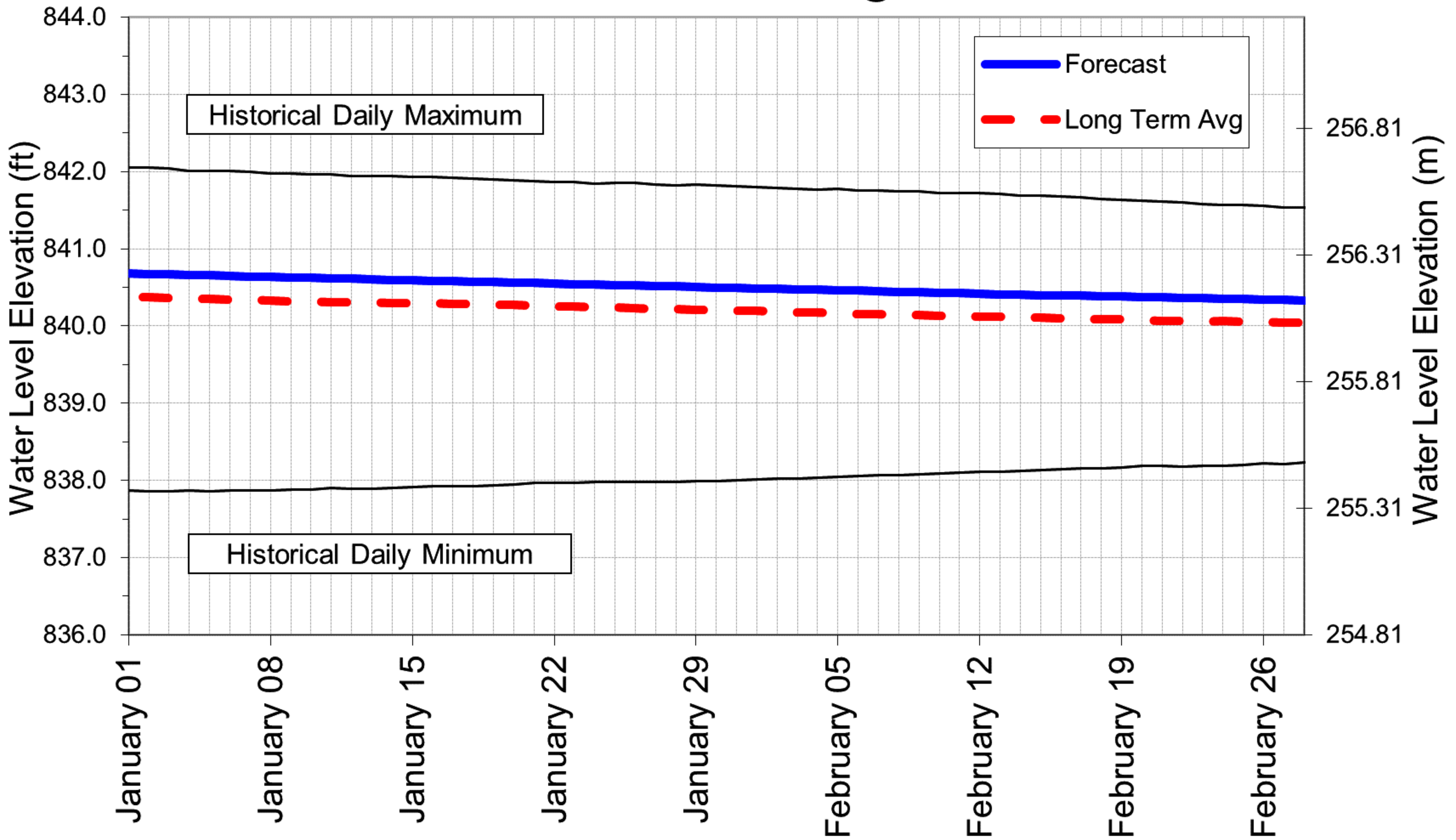
Manitoba Métis Federation, President Chartrand, Winnipeg

Regional Director General, Manitoba Region, Indigenous and Northern Affairs Canada

CBC North Country Radio for broadcast as Community Service Announcement

Arctic Radio CJAR The Pas for broadcast in Cree & English @ 6:00 PM for 4 consecutive days from receipt (via CHTM for translation)

SOUTH MOOSE LAKE 60 Day Water Level Forecast Jan 1, 2025 to Feb 28, 2025  
 Station: 05KK006 South Moose Lake @ Moose Lake Narrows



Notes:

- Based on Manitoba Hydro Forecast dated: December 30, 2024
- Period of Record: Apr/77 to Present
- Historical daily minimum & maximum water levels pertain to the period of record above
- Conversion: 1 foot = 0.3048 metres

Please post this graph in a conspicuous location for residents' reference.



2024 12 30

## NOTICE OF OPERATING PLAN FORECAST - LAKE WINNIPEG OUTFLOWS

On January 1, 2025 the outflow from Lake Winnipeg is forecast to be 88,230 cubic feet per second (cfs). The outflow from the lake is expected to be gradually decreased to 82,500 cfs by the end of January.

During the month of February the outflow is expected to be gradually decreased to 77,900 cfs by the end of month.

This information is also available from the Manitoba Hydro website at [www.hydro.mb.ca](http://www.hydro.mb.ca).

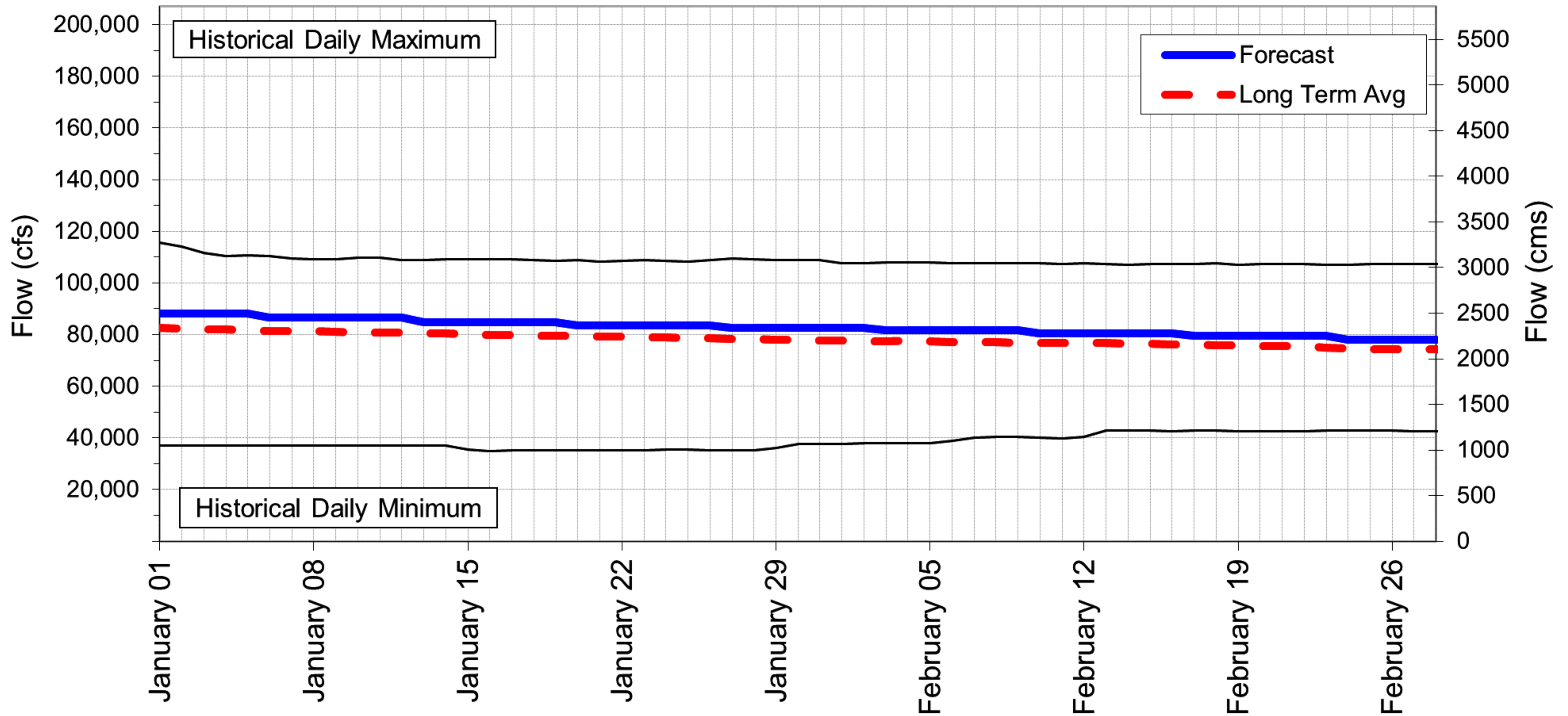
**Distribution List:**

CHIEF, Norway House Cree Nation  
MAYOR, Norway House Community Council  
CHIEF, Tataskweyak Cree Nation, Split Lake  
CHIEF, War Lake First Nation, Ilford  
Manager Keenanow Trust, Norway House Cree Nation  
Manitoba Métis Federation, President Chartrand, Winnipeg  
Regional Director General, Manitoba Region, Indigenous and Northern Affairs Canada



# LAKE WINNIPEG OUTFLOWS 60 Day Flow Forecast Jan 1, 2025 to Feb 28, 2025

Station: 05UB001 + Jenpeg Generating Station



## Notes:

- Based on Manitoba Hydro Forecast dated: Dec 30, 2024
- Period of Record: Apr/77 to Present
- Historical daily minimum & maximum flows pertain to the period of record above
- Conversion: 1 cms = 35.31 cfs

---

2024 12 30

## NOTICE OF OPERATING PLAN FORECAST - **NOTIGI OUTFLOWS**

On January 1, 2025 the outflow from Notigi C.S. is forecasted to be 25,000 cubic feet per second (cfs). The outflow is expected to remain fairly constant near 25,000 cfs until the end of January.

During the month of February the outflow is expected to gradually decrease to 23,500 cfs by the end of the month.

**Distribution List:**

CHIEF, Tataskweyak Cree Nation, Split Lake

CHIEF, Nisichawayasihk Cree Nation

CHIEF, War Lake First Nation, Ilford

MAYOR, Nelson House Community Council

CHIEF, O-Pipon-Na-Piwin Cree Nation

SIL Trappers Association & SIL Fishermens Association, S. Ducharme, South Indian Lake

Manitoba Métis Federation, President Chartrand, Winnipeg

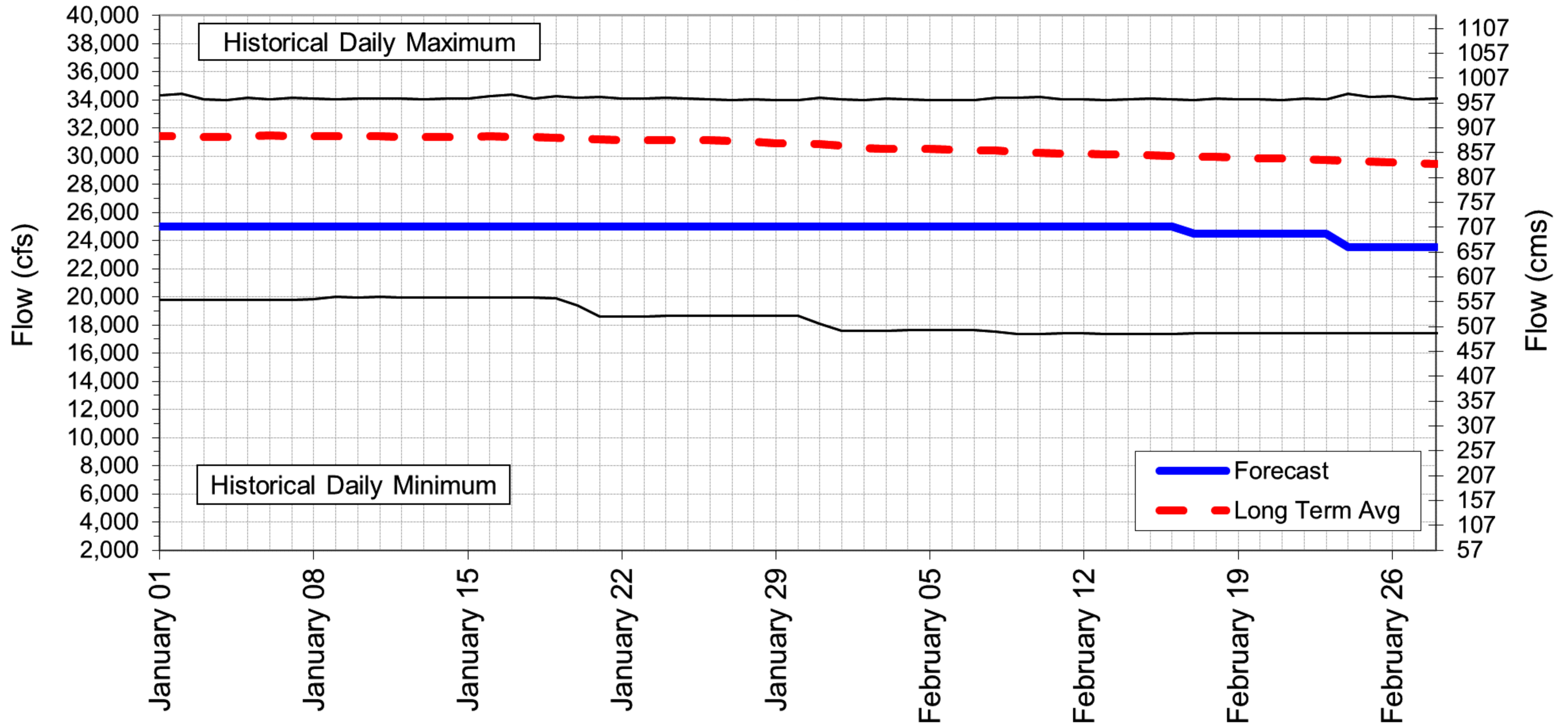
Regional Director General, Manitoba Region, Indigenous and Northern Affairs Canada

NCN Achimowin TV/Radio Communications for broadcast in Cree & English for 4 consecutive days from recei



# NOTIGI OUTFLOWS 60 Day Flow Forecast Jan 1, 2025 to Feb 28, 2025

Station: Notigi Control Structure



**Notes:**

- Based on Mnaitoba Hydro Forecast dated: Dec 30, 2024
- Period of Record: Apr/77 to Present
- Historical daily minimum & maximum flows pertain to the period of record above
- Conversion: 1 cms = 35.31 cfs





2024 12 30

## NOTICE OF OPERATING PLAN FORECAST - **PLAYGREEN LAKE**

On January 1, 2025 the level of Playgreen Lake at Norway House is forecasted to be 711.2 feet. The level of the lake is expected to remain fairly constant near elevation 711.1 feet during the month of January.

During the month of February the level of the lake is expected to remain fairly constant near elevation 711.0 feet.

For water level and flow information including near real-time water levels and 14-day forecast estimates, please visit Manitoba Hydro's website at [www.hydro.mb.ca/waterlevels](http://www.hydro.mb.ca/waterlevels)

**Distribution List:**

CHIEF, Norway House Cree Nation

MAYOR, Norway House Community Council

MB Transportation & Infrastructure, Lokesh Kumar

Norway House Cree Nation, Keenanow Trust

Manitoba Métis Federation, President Chartrand, Winnipeg

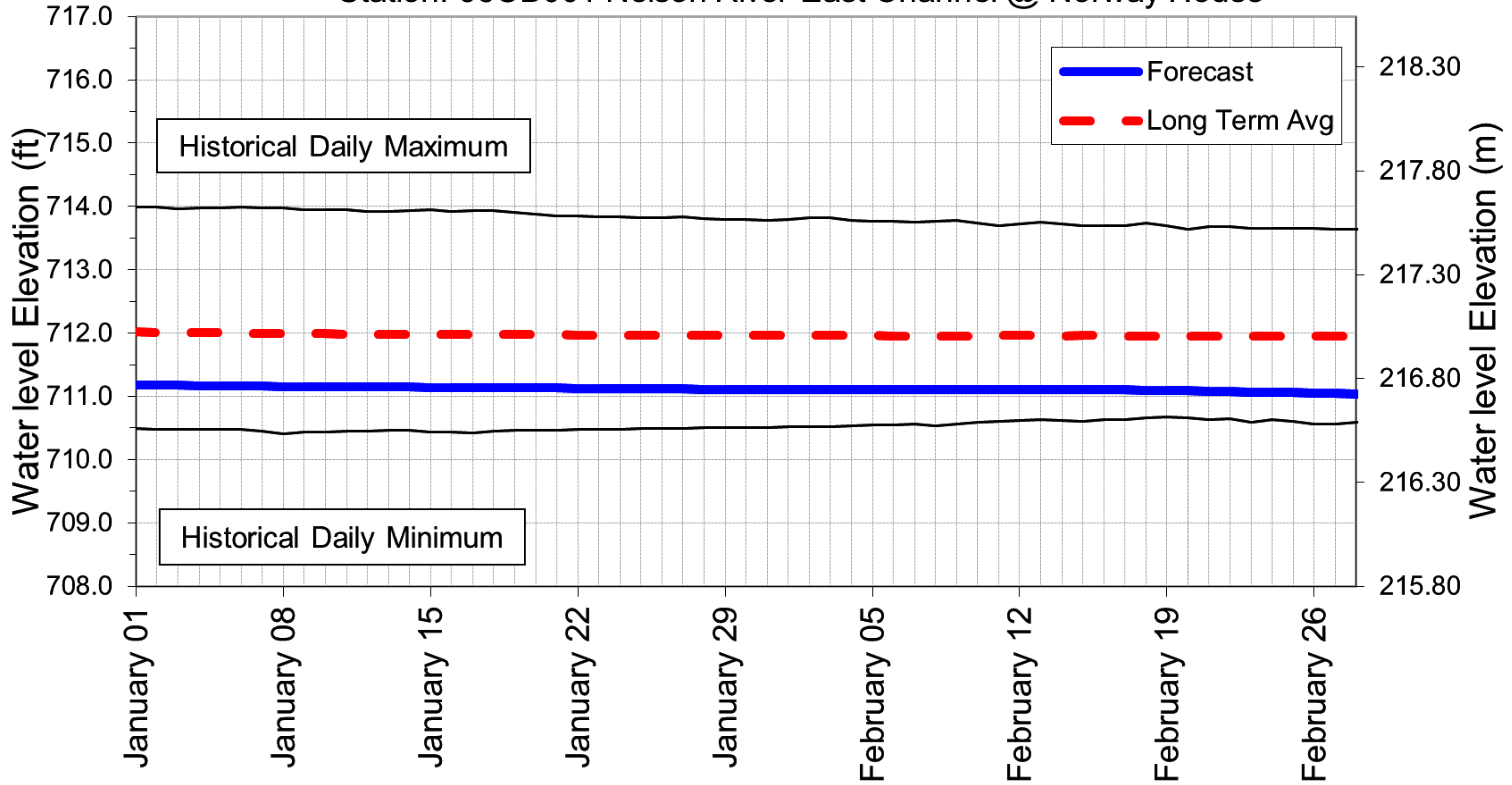
Regional Director General, Manitoba Region, Indigenous and Northern Affairs Canada

CBC North Country Radio for broadcast as Community Service Announcement

Arctic Radio CHTM Thompson for broadcast in Cree & English @ 7:00 PM & 8:30 PM for 4 consecutive days from receipt

Norway House Radio for broadcast in Cree & English for @ 12:15 PM & 5:45 PM 4 consecutive days from receipt

PLAYGREEN LAKE 60 Day Water Level Forecast Jan 1, 2025 to Feb 28, 2025  
 Station: 05UB001 Nelson River East Channel @ Norway House



Notes:

- Based on Manitoba Hydro Forecast dated: Dec 30, 2024
- Period of Record: Apr/77 to Present
- Historical daily minimum & maximum water levels pertain to the period of record above



Please post this graph in a conspicuous location for residents' reference.

2024 12 30

## NOTICE OF OPERATING PLAN FORECAST - **SOUTHERN INDIAN LAKE**

On January 1, 2025 the level of Southern Indian Lake is forecasted to be 845.8 feet. The level of the lake is expected to fall 1 foot to elevation 844.8 feet by the end of January.

During the month of February the level of the lake is expected to fall 10 inches to elevation 844.0 feet by the end of the month.

For water level and flow information including near real-time water levels and 7-day forecast estimates, please visit Manitoba Hydro's website at [www.hydro.mb.ca/waterlevels](http://www.hydro.mb.ca/waterlevels)

**Distribution List:**

CHIEF, O-Pipon-Na-Piwin Cree Nation, South Indian Lake

CHIEF, Tataskweyak Cree Nation, Split Lake

CHIEF, War Lake First Nation, Ilford

MB Transportation & Infrastructure, Lokesh Kumar

SIL Trappers Association & SIL Fishermens Association, S. Ducharme, South Indian Lake

South Indian Lake Environmental Steering Committee, O-Pipon-Na-Piwin Cree Nation, South Indian Lake

Manitoba Métis Federation, President Chartrand, Winnipeg

Regional Director General, Manitoba Region, Indigenous and Northern Affairs Canada

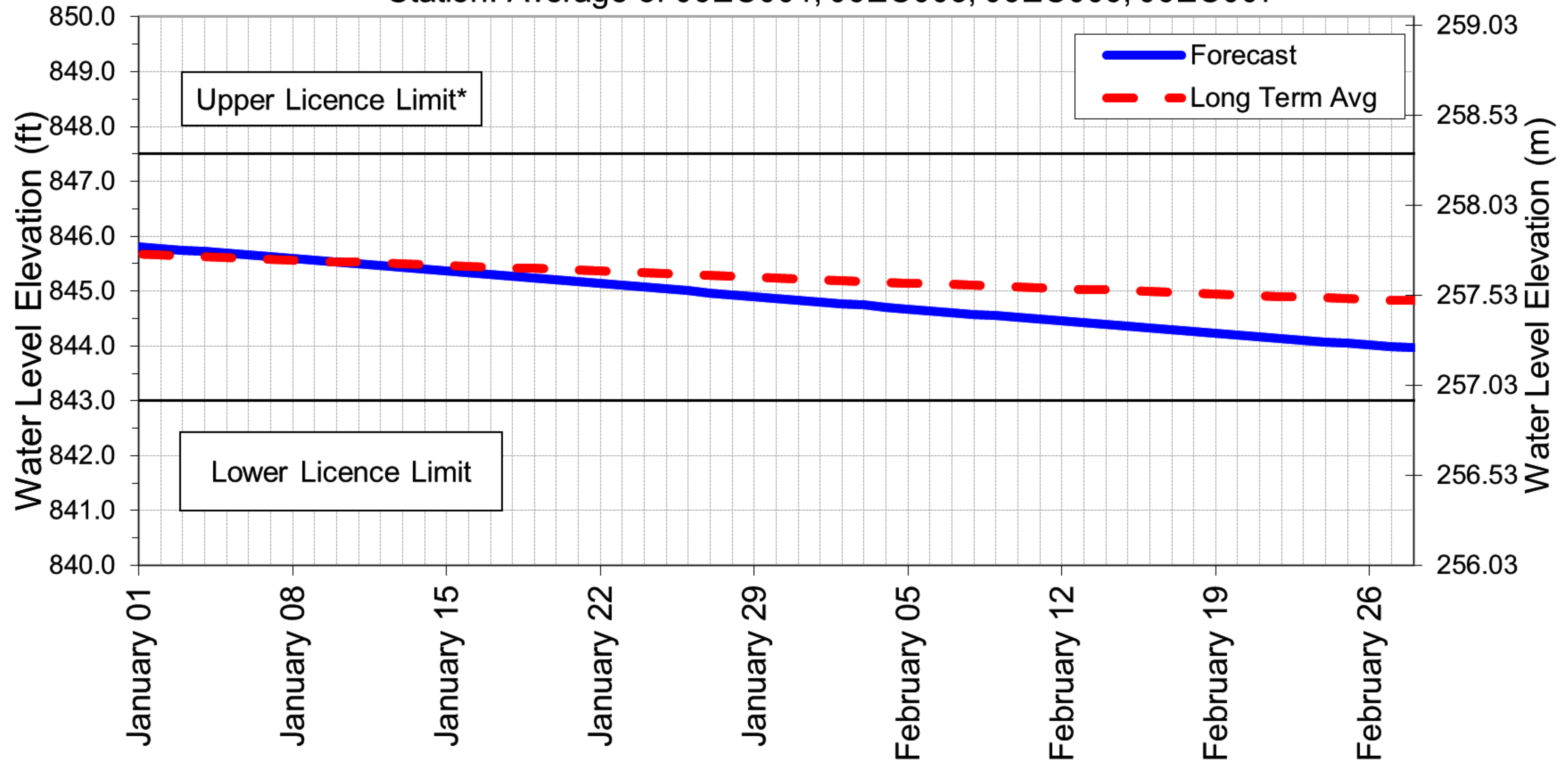
Arctic Radio CHTM Thompson for broadcast in Cree & English @ 7:00 PM & 8:30 PM for 4 consecutive days from receipt

Radio station 101.9



# SOUTHERN INDIAN LAKE 60 Day Water Level Forecast Jan 1, 2025 to Feb 28, 2025

Station: Average of 06EC001, 06EC003, 06EC006, 06EC007



## Notes:

- Based on Manitoba Hydro Forecast dated: Dec 30, 2024
- Period of Record: Apr/77 to Present
- Conversion: 1 foot = 0.3048 metres

\*When lake level exceeds this limit, maximum discharge is required to return the lake level

**Please post this graph in a conspicuous location for residents' reference.**

---

2024 12 30

## NOTICE OF OPERATING PLAN FORECAST - **SOUTHERN INDIAN LAKE INFLOWS**

On January 1, 2025 the Southern Indian Lake inflow is forecast to be 19,800 cubic feet per second (cfs). The lake inflow is expected to gradually decrease to 18,400 cfs by the end of January.

During the month of February the inflow is expected to gradually decrease to 17,500 cfs by the end of the month.

**Distribution List:**

CHIEF, Tataskweyak Cree Nation, Split Lake

CHIEF, Nisichawayasihk Cree Nation

CHIEF, War Lake First Nation, Ilford

MAYOR, Nelson House Community Council

CHIEF, O-Pipon-Na-Piwin Cree Nation

SIL Trappers Association & SIL Fishermens Association, S. Ducharme, South Indian Lake

South Indian Lake Environmental Steering Committee, O-Pipon-Na-Piwin Cree Nation, South Indian Lake

Manitoba Métis Federation, President Chartrand, Winnipeg

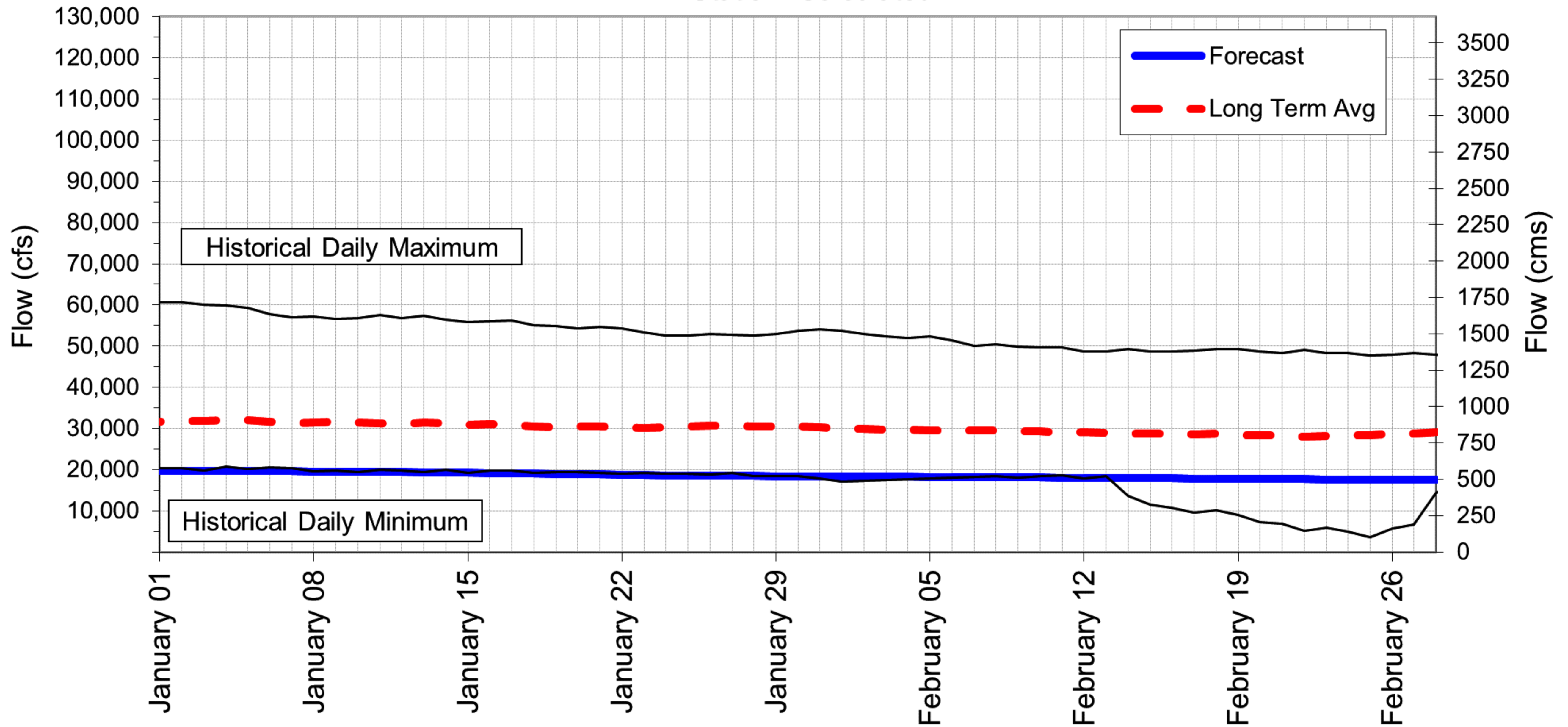
Regional Director General, Manitoba Region, Indigenous and Northern Affairs Canada

Radio station 101.9

NCN Achimowin TV/Radio Communications for broadcast in Cree & English for 4 consecutive days from recei

# SOUTHERN INDIAN LAKE INFLOWS 60 Day Flow Forecast Jan 1, 2025 to Feb 28, 2025

Station: Calculated



**Notes:**

- Based on Manitoba Hydro Forecast dated: Dec 30, 2024
- Period of Record: Apr/77 to Present
- Historical daily minimum & maximum flows pertain to the period of record above
- Conversion: 1 cms = 35.31 cfs



2024 12 30

## NOTICE OF OPERATING PLAN FORECAST - **SIPIWESK LAKE**

On January 1, 2025 the level of Sipiwesk Lake is forecasted to be 611.7 feet. The level of the lake is expected to fall 4 inches to elevation 611.4 feet by the end of January.

During the month of February the level of the lake is expected to fall 5 inches to elevation 611.0 feet by the end of the month.

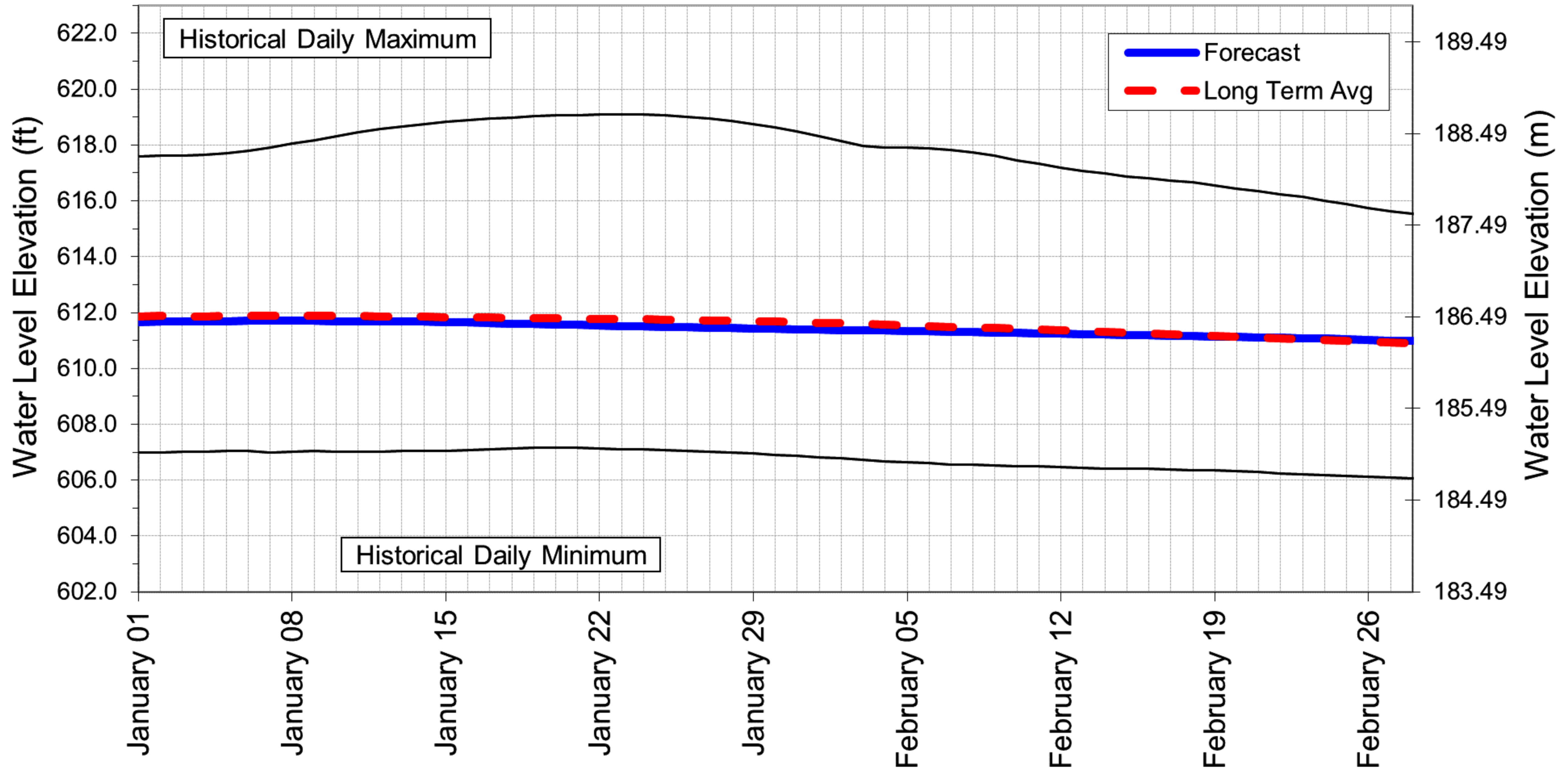
For water level and flow information including near real-time water levels and 14-day forecast estimates, please visit Manitoba Hydro's website at [www.hydro.mb.ca/waterlevels](http://www.hydro.mb.ca/waterlevels)

**Distribution List:**

CHIEF, Cross Lake First Nation  
MAYOR, Cross Lake Community Council  
Wabowden Community Council  
Communications Officer, Pimicikamak Cree Nation  
Tataskweyak Trust, Key Communicator, J. Garson, Split Lake  
Manitoba Métis Federation, President Chartrand, Winnipeg  
Regional Director General, Manitoba Region, Indigenous and Northern Affairs Canada  
CBC North Country Radio for broadcast as Community Service Announcement  
Arctic Radio CHTM Thompson for broadcast in Cree & English @ 7:00 PM & 8:30 PM for 4 consecutive days from receipt  
CFNC Cross Lake Radio for broadcast in Cree & English @ 12:30 PM & 6:30 PM for 4 consecutive days from receipt

# SIPIWESK LAKE 60 Day Water Level Forecast Jan 1, 2025 to Feb 28, 2025

Station: 05UD006 Sipiwesk Lake @ Forestry Dock



## Notes:

- Based on Manitoba Hydro Forecast dated: Dec 30, 2024
- Period of Record: Apr/77 to Present
- Historical daily minimum & maximum water levels pertain to the period of record above
- Conversion: 1 foot = 0.3048 metres

Please post this graph in a conspicuous location for residents' reference.



14-360 Portage Ave • Winnipeg Manitoba Canada • R3C 0G8  
Telephone / No de téléphone : (204) 360-4522 • Fax / No de télécopieur : (204) 360-6128  
esbanting@hydro.mb.ca

2024 12 30

## NOTICE OF OPERATING PLAN FORECAST - **SPLIT LAKE**

On January 1, 2025 the level of Split Lake is forecasted to be 549.8 feet. The level of the lake is expected to rise 3 inches to elevation 550.1 feet by the fourth week of the month and then fall 2 inches to elevation 549.9 feet by the end of January.

During the month of February the level of the lake is expected to fall 5 inches to elevation 549.4 feet by the end of the month.

For water level and flow information including near real-time water levels and 7-day forecast estimates, please visit Manitoba Hydro's website at [www.hydro.mb.ca/waterlevels](http://www.hydro.mb.ca/waterlevels)

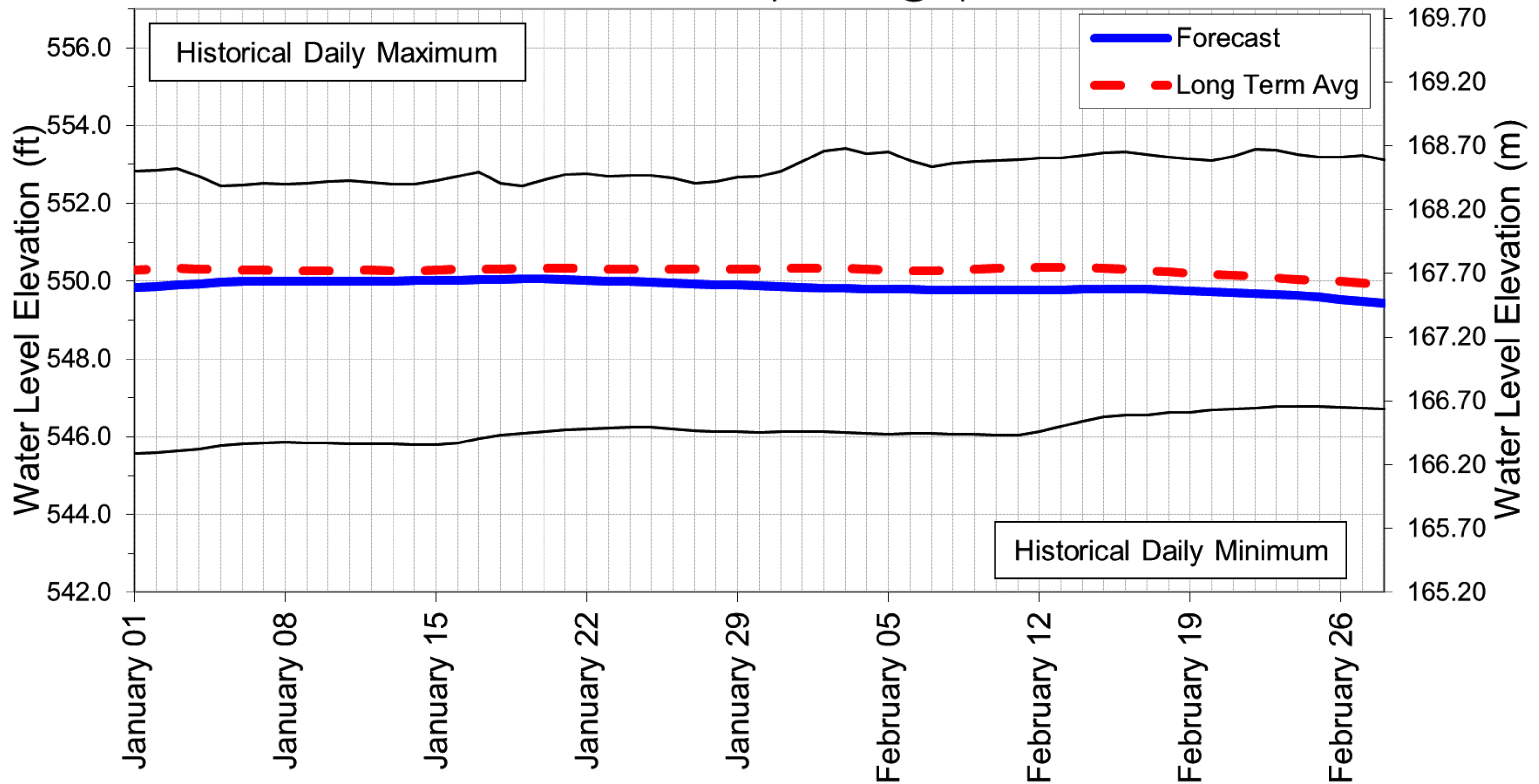
### **Distribution List:**

CHIEF, Tataskweyak Cree Nation, Split Lake  
CHIEF, York Factory First Nation, York Landing  
CHIEF, War Lake First Nation, Ilford  
MB Transportation & Infrastructure, Lokesh Kumar  
Tataskweyak Trust, Key Communicator, J. Garson, Split Lake  
Tataskweyak Trust, Mgr, M. Garson, Split Lake  
Tataskweyak Environmental Monitoring Agency, Split Lake  
YFFN Director of Operations, York Landing  
Manitoba Métis Federation, President Chartrand, Winnipeg  
Regional Director General, Manitoba Region, Indigenous and Northern Affairs Canada  
CBC North Country Radio for broadcast as Community Service Announcement  
Arctic Radio CHTM Thompson for broadcast in Cree & English @ 7:00 PM & 8:30 PM for 4 consecutive days from receipt  
CJKD Split Lake Radio for broadcast in Cree & English twice daily for 4 consecutive days from receipt  
CHYL York Landing Radio for broadcast in Cree & English twice daily for 4 consecutive days from receipt



# SPLIT LAKE 60 Day Water Level Forecast Jan 1, 2025 to Feb 28, 2025

Station: 05UF003 Split Lake @ Split Lake



**Notes:**

- Based on Manitoba Hydro Forecast dated: Dec 30, 2024
- Period of record shown: Sep/77 to Present
- Historical daily minimum & maximum water levels pertain to the period of record above

**Please post this graph in a conspicuous location for residents' reference.**



---

2024 12 30

## NOTICE OF OPERATING PLAN FORECAST - **STEPHENS LAKE**

On January 1, 2025 the level of Stephens Lake is forecasted to be 461.1 feet. The level of the lake is expected to rise 2 inches to elevation 461.3 feet by the first week of the month and then fall 8 inches to elevation 460.6 feet by the end of January.

During the month of February the level of the lake is expected to fall 4 inches to elevation 460.3 feet by the third week of the month and then rise 2 inches to elevation 460.5 feet by the end of the month.

For water level and flow information including near real-time water levels and 7-day forecast estimates, please visit Manitoba Hydro's website at [www.hydro.mb.ca/waterlevels](http://www.hydro.mb.ca/waterlevels)

### **Distribution List:**

CHIEF, Tataskweyak Cree Nation, Split Lake

CHIEF, York Factory First Nation, York Landing

CHIEF, Fox Lake First Nation, Gillam

CHIEF, War Lake First Nation, Ilford

Ilford Community Council, Ilford

Tataskweyak Trust, Key Communicator, J. Garson, Split Lake

Tataskweyak Trust, Mgr, M. Garson, Split Lake

YFFN Director of Operations, York Landing

Manitoba Métis Federation, President Chartrand, Winnipeg

Regional Director General, Manitoba Region, Indigenous and Northern Affairs Canada

Associate Director for Implementation and Future Development, Val Massan

CBC North Country Radio for broadcast as Community Service Announcement

Arctic Radio CHTM Thompson for broadcast in Cree & English @ 7:00 PM & 8:30 PM for 4 consecutive days from receipt

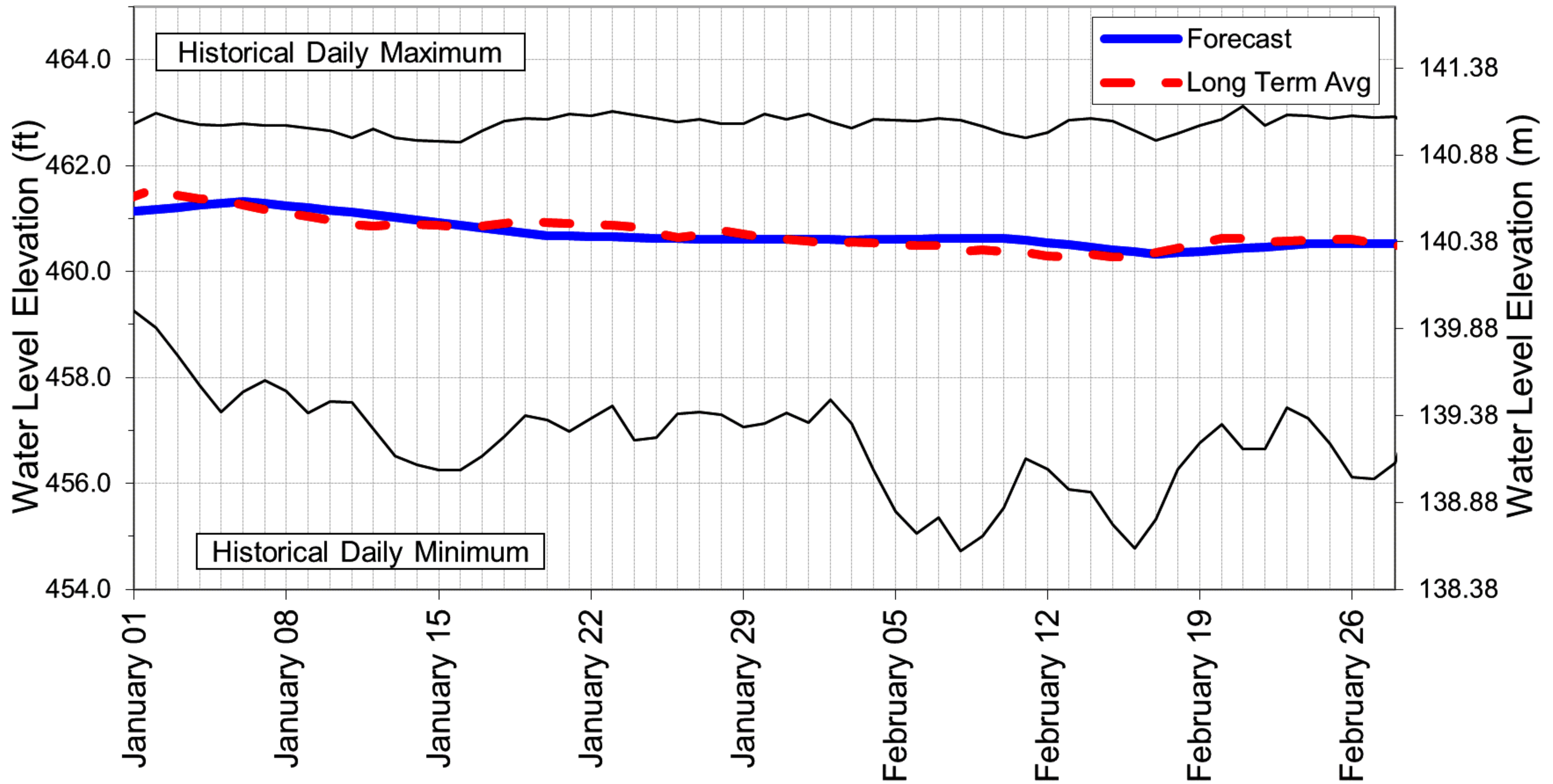
CJKD Split Lake Radio for broadcast in Cree & English twice daily for 4 consecutive days from receipt

CHYL York Landing Radio for broadcast in Cree & English twice daily for 4 consecutive days from receipt



# STEPHENS LAKE 60 Day Water Level Forecast Jan 1, 2025 to Feb 28, 2025

## Station: Kettle GS



**Notes:**

- Based on Manitoba Hydro Forecast dated: Dec 30, 2024
- Period of Record: Sep/77 to Present
- Historical daily minimum & maximum water levels pertain to the period of



**Please post this graph in a conspicuous location for residents' reference.**